

LIST OF DRAWINGS

DATE	DRAWING NUMBER	DRAWING NUMBER	DRAWING NUMBER	DRAWING NUMBER	DRAWING NUMBER	DRAWING NUMBER	DRAWING NUMBER	REV. NO. NUMBER
1	CASE TOOL	D34005		A 19716	B15743	C17840	D34004	B0441
2	SWITCH AND SOCKET	A17020Z	A 5597	A 4991L	A 62585	B 57484	C1243	BCL73
3	CONNECTION	A17020E	A 9358	A 69913	A 72266			B5431
4	WASP	A16975L	A 7050	A169984	A48374			B5431
5	WASHER	A16975B	A 5044	A169215	A17072			BMS21
6	REINFORCE	A-65911	A18746	A-65926	A17073			BMS2
7	CONNECTION	A169977	A 8551	A169921	A 7079			B5432
8	DOOR	B15748	A16996G	A 65976	A70183			BMS2
9	BOTTOM	B-5748Z	A43878	A15915				BAW3B
10	TRAY	B-57496	A 6592E	A169930				
11			A 65913	A 65931				
12	LID	C68367	A 65914	A 69931				
13	SEPARATOR	C18368	A1570 S	A169933				
14	LIST OF AUTHORIZED ASSEMBLIES	B15748	A 6596	A 69739				
15	BODY AND SEPARATOR	D34261	A16977	A169235				
16	LIST OF PARTS	B-56813	A16978	A169236				
17	LIST OF PARTS	B064214	A16979	A 65937				
18	LIST OF PARTS	D-464934	A 69920	A69738				

PERTAINS TO ALTERNATE DESIGN

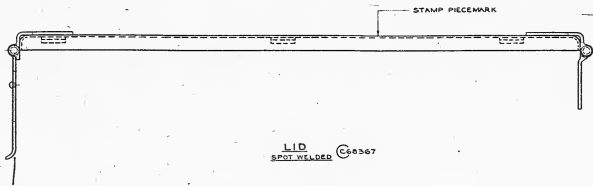
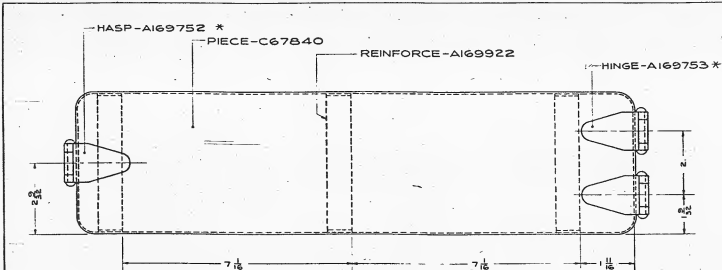
ENDING DIAGRAM

DOOR - B15748
SPOT WELD TO BODY
SUSPENSIBLE OLD DWG. D34005
UNDER REVISION DATE OF 12-20-64

REVISED		DATE	BY	CHKD
1	BY: [signature]	11-1-64	SWK	
2	BY: [signature]			
3	BY: [signature]			
4	BY: [signature]			
5	BY: [signature]			
6	BY: [signature]			
7	BY: [signature]			
8	BY: [signature]			
9	BY: [signature]			
10	BY: [signature]			
11	BY: [signature]			
12	BY: [signature]			
13	BY: [signature]			
14	BY: [signature]			
15	BY: [signature]			
16	BY: [signature]			
17	BY: [signature]			
18	BY: [signature]			
19	BY: [signature]			
20	BY: [signature]			

MICROFILM - A44 - 731

D34005 DRUMMERY COPT. U.S.I. MADE AT ROCK ISLAND ILL.



PHYSICAL PROPERTIES		JUNE 30 1939	
		REVISIONS	
1*			
2*			
3*			
4*			
5*			
6*			
7*			
8*			
9*			
10*			

DRG. PERTAINS TO

D34005

* FINDING DIAGRAM

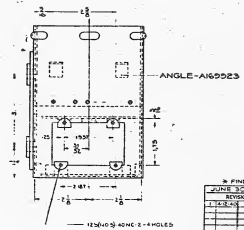
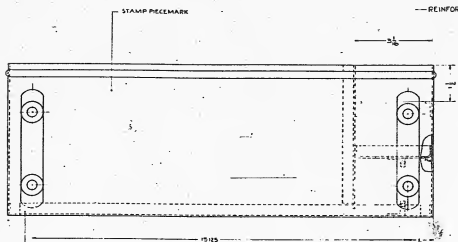
SYMBOL	
1	175
2	175
3	175
4	175
5	175
6	175
7	175
8	175
9	175
10	175

U.S.P. 22
 ORDNANCE DEPT. U.S.A.
 68367

MADE AT ROCK ISLAND ARSE

MICROFILM - A 44 - 770

PROG	
PROPS	
1.1	
1.2	
1.3	
1.4	
1.5	
1.6	
1.7	
1.8	
1.9	
2.0	



BOTTOM - B157482 #

BODY AND SEPARATOR
DIPOT WELDED

SEARCHING DIAGRAM

JUNE 20 1953

SEARCHED	INDEXED	SERIALIZED	FILED
FBI - NEW YORK			
SUBMITTED			
EXAMINED			
SEARCHED			
INDEXED			
SERIALIZED			
FILED			
JUN 20 1953			
FBI - NEW YORK			

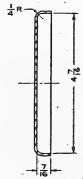
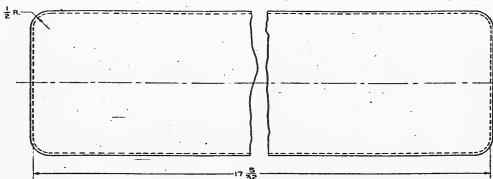
D34261

OFFICE OF ORIGINANCE DEPT. U.S.
MADE AT ROCK ISLAND ILL

MICROFILM - A44 - 723

PHYSICAL PROPERTIES	JUNE 30, 1938 REVISIONS
TEMP	1 A-12-30
TEMP	
EL 2	
HTG	
T	
W.C.	
WT	

DRG PERTAINS TO
C 63367
C 91604



PIECE **C67840**
PLAIN CARBON STEEL
 1/16 THICK, NOT ROLLED,
 PICKLED, DEEP DRAWING

NOTE:-
 MAKE TO FIT BODY AND SEPARATOR, D54261.
 REMOVE ALL SHARP EDGES.

PROPERTY OF THE BUREAU OF CHEMISTRY
 AND METALLOGICAL ENGINEERING
 DIVISION
 NATIONAL BUREAU OF STANDARDS

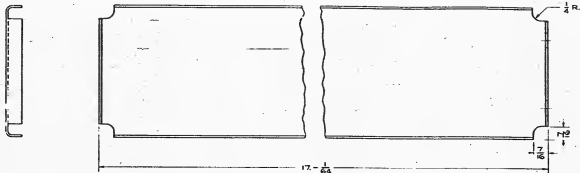
SYMBOL
APPROVED FOR ISSUANCE BY THE CHIEF OF BUREAU
DATE
APPROVED BY DESIGNER
DATE
SUBMITTED:
DATE

SCALE $\frac{1}{2}$ **C67840**

ORIGINATOR: **C-63367**
 ORIGINANCE DEPT.: **U.S.**

MADE AT ROCK ISLAND A.S.

MICROFILM - A 44 - **772**



PHYSICAL PROPERTIES		JUNE 30, 1939 REVISIONS	
Y P		1	4.12.40
T S			
U T			
PD			
BN			
SPCA			
SL			

DRG PERTAINS TO

0517492

PIECE C67843
 PLAIN CARBON STEEL
 1/16" THICK, HOT ROLLED,
 PICKLED

SYMBOL	
1	
2	
3	
4	
SUBMITTED	
APPROVED BY (NAME OF THE WORKING DRAWER)	

SCALE + **C67843**

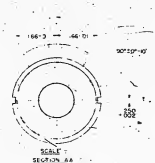
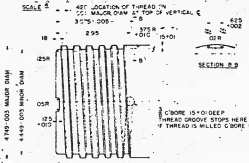
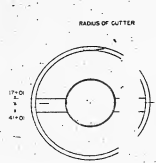
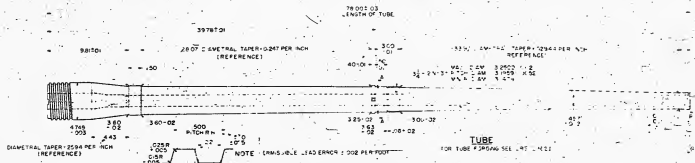
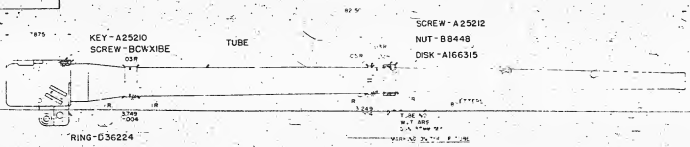
ORDINANCE DEPT. U. S.

MADE AT ROCK ISLAND ARSENAL

MICROFILM - A 44 - 729

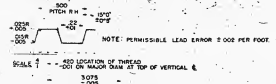
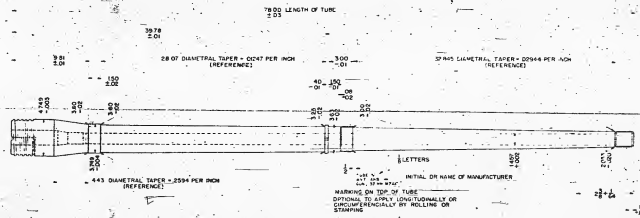
NEAR TOLERANCE & FINAL FINISH

IN	31
10	30
20	29
30	28
40	27
50	26
60	25
70	24
80	23
90	22
100	21



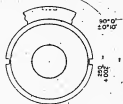
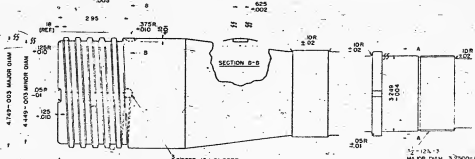
NOTE: COPPER PLATE, USING 5% PHOSPHOR AND CAST NON FERROUS DISSOLVED IN WATER

GUN, 37MM. M3	
GENERAL DRAWING	
APPROVED	DATE
REVISIONS	51 100 2
SYMBOL	
DRAWN BY	
CHECKED BY	
DESIGNED BY	
DATE	
PROJECT	
D	
OPERANCE DUFF, U.S.A.	



TUBE C 69289
FINISH AS NOTED

NOTE: UNLESS OTHERWISE SPECIFIED
CORNER COR-DI TUBES COR-DI
FOR CHAMFER DETAILS SEE DRAWING 83082
FOR TUBE FORMING SEE DRAWING 83622
FOR ALL CHAMFER DETAILS SEE DRAWING 83082
TWIST OF ROLLING UNIFORM RIGHT HAND TURN IN 25 CALIBERS



NOTE: COPPER PLATE USING SULPHATE AND
GAS-FREE IRON FILMS DISSOLVED IN WATER.

JULY 13, 1942

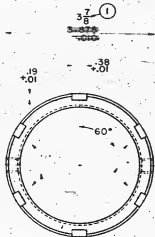
DESIGNED BY	W. E. B.
CHECKED BY	J. J. B.
APPROVED BY	J. J. B.

SCALE 3/16" = 1"

69289

ARMY AIR FORCE U.S.A.



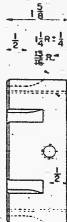


90° SINK .06 DEEP

3/8-16NC-3

NUT
ALLOY STEEL
FINISH

(B) 8448



3/4-12N-3

3.2500 - MAJOR DIAM.
3.1959 + .0052 - PITCH DIAM.
3.1598 + .0090 - MINOR DIAM.

THE FACE V. ST. BE HELD PERPENDICULAR TO THE THREADS, WITHIN .0015

1/16 X 45°

NOTE: EXCEPT AS NOTED, CORNERS .03R, FILLETS .02R.

SCALE: 1

8448

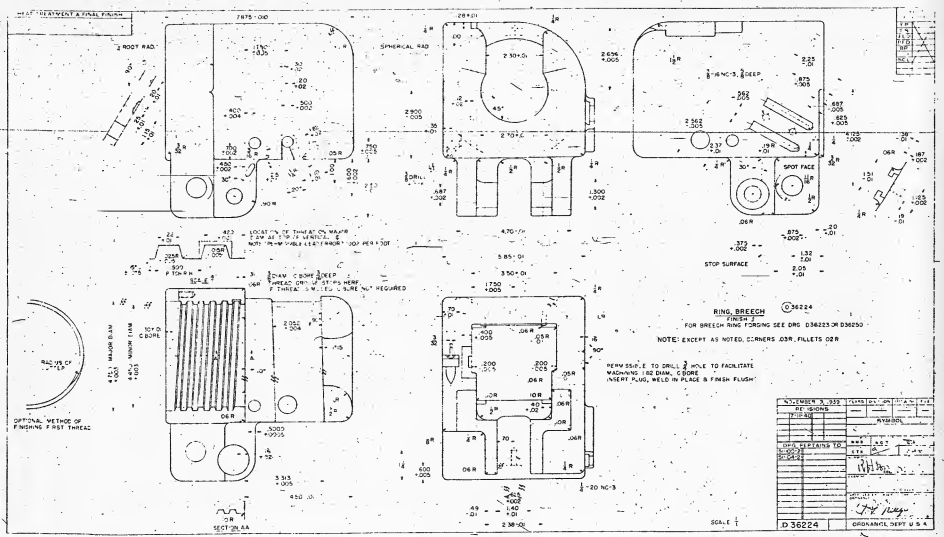
DATE OF PROCESSING	DECEMBER 22, 1938
REVISIONS	
1. 65,000	1. 11-22-41
2. 95,000	2. 5-13-43
3.	
4.	
5.	
6.	
7.	
8.	
9.	
10.	
11.	
12.	
13.	
14.	
15.	
16.	
17.	
18.	
19.	
20.	
21.	
22.	
23.	
24.	
25.	
26.	
27.	
28.	
29.	
30.	
31.	
32.	
33.	
34.	
35.	
36.	
37.	
38.	
39.	
40.	
41.	
42.	
43.	
44.	
45.	
46.	
47.	
48.	
49.	
50.	
51.	
52.	
53.	
54.	
55.	
56.	
57.	
58.	
59.	
60.	
61.	
62.	
63.	
64.	
65.	
66.	
67.	
68.	
69.	
70.	
71.	
72.	
73.	
74.	
75.	
76.	
77.	
78.	
79.	
80.	
81.	
82.	
83.	
84.	
85.	
86.	
87.	
88.	
89.	
90.	
91.	
92.	
93.	
94.	
95.	
96.	
97.	
98.	
99.	
100.	
101.	
102.	
103.	
104.	
105.	
106.	
107.	
108.	
109.	
110.	
111.	
112.	
113.	
114.	
115.	
116.	
117.	
118.	
119.	
120.	
121.	
122.	
123.	
124.	
125.	
126.	
127.	
128.	
129.	
130.	
131.	
132.	
133.	
134.	
135.	
136.	
137.	
138.	
139.	
140.	
141.	
142.	
143.	
144.	
145.	
146.	
147.	
148.	
149.	
150.	
151.	
152.	
153.	
154.	
155.	
156.	
157.	
158.	
159.	
160.	
161.	
162.	
163.	
164.	
165.	
166.	
167.	
168.	
169.	
170.	
171.	
172.	
173.	
174.	
175.	
176.	
177.	
178.	
179.	
180.	
181.	
182.	
183.	
184.	
185.	
186.	
187.	
188.	
189.	
190.	
191.	
192.	
193.	
194.	
195.	
196.	
197.	
198.	
199.	
200.	

SYMBOL

WMB JF 5

CTK

McMurry



423 LOCATION OF THREAD ON MAJOR CIRCUMFERENCE AT TOP OF VENTURE.
 NOTE: "DRILL AND REAM" - 100 PER .002

3 DRAW CORNER DEEP THROUGH DRILL STOPS HERE. F THREAD & WELD FILLING REQUIRED



OPTIONAL METHOD OF FINISHING FIRST THREAD

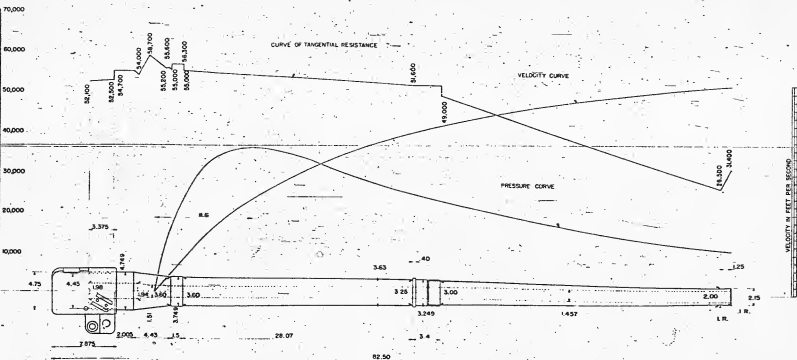
RING, BREECH
 FOR BREECH RING FORGING SEE DRG 036223 OR D36250

NOTE: EXCEPT AS NOTED, CORNERS .03R, FILLETS .02R

PERMISSIBLE TO DRILL 2 HOLE TO FACILITATE MACHINING 1.02 DIAM. C BORE. INSERT PLUG, WELD IN PLACE & FINISH FLUSH!

NOVEMBER 3, 1959	REVISED	DATE	BY
REVISIONS	REASON		
1	AS SHOWN		
DRAWING EXPLAINS TO			
DESIGNED BY	APPROVED BY	DATE	
SCALE			
D 36224			
ORIGINALLY DESIGNED BY U.S.A.			

SCALE OF PHYSICAL RESISTANCE & PRESSURE - 1 LB. PER SQ. IN. = 100,000
 SCALE OF VELOCITY - 1 FT. PER SECOND = 100,000



PHYSICAL PROPERTIES	
T.S.	
T.C.	
BR	
M.L.	
P.C.	

CHARACTERISTICS OF GUN

LENGTH OF BORE IN CALIBERS	33.5
MUZZLE VELOCITY	2600 F.S.
VOLUME OF CHAMBER	13.32 CUB. IN.
WEIG. OF PROJECTILE	1.82 LBS.
WEIGHT OF CHARGE	8.025
TRAVEL OF PROJECTILE	29.25
DENSITY OF LOADING	435
MAXIMUM POWDER PRESSURE	51,000 LBS. PER SQ. IN.
WEIGHT OF GUN	78 LBS.

FOR CHAMBER DETAILS SEE DRAWING 8202Z
 FOR BARREL DETAILS SEE DRAWING 82-02-2
 TWIST OF RIFLING - UNIFORM - RIGHT HAND, 1 TURN IN 23 CALIBERS.

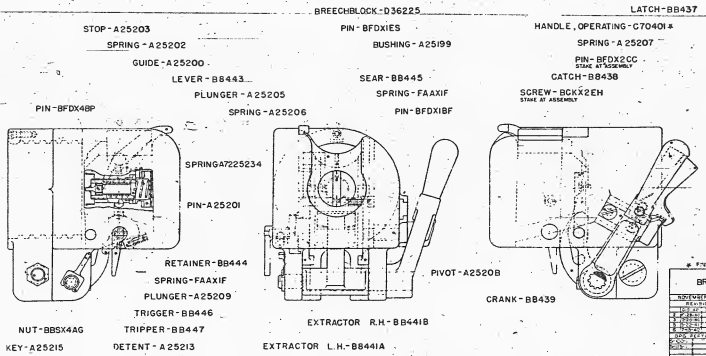
0 2 4 6 8 10 12 14 16 18 20 INCHES

GUN, 37MM. M3 BALLISTIC DRAWING	
DESIGN NO. 839	FILE NUMBER 81100-3
REVISIONS	51 100 3
TITLES	
PHYSICAL TESTS	PERFORMED
BY	DATE
INSTRUMENTS	USED
REMARKS	
DRAWN BY	
CHECKED BY	
DESIGNED BY	
TESTED BY	
APPROVED BY	
DATE	
DRAWING OFFICE, WAR DEPT.	

MICROFILM - A 44 - 17

HEAT TREATMENT & FINAL FINISH

REV.	
1	
2	
3	
4	
5	
6	
7	
8	
9	
10	



370 NG DIAGRAM

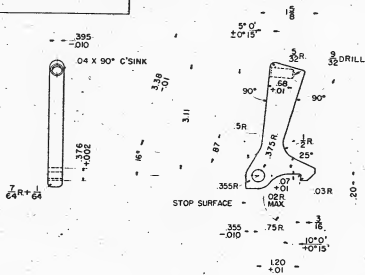
BREECH MECHANISM ASSEMBLY

REV.	DESCRIPTION	DATE	BY	CHKD
1	ASSEMBLY			
2				
3				
4				
5				
6				
7				
8				
9				
10				

D69288

ORDNANCE DEPT. U. S. A.

HEAT TREATMENT & FINAL FINISH
CARBURIZE LATCH SURFACE .01 DEEP



PHYSICAL PROPERTIES		DECEMBER 22, 1938 REVISIONS	
TP		1	10-2-38
TS		2	3-7-41
EL 2			
RED			
SP			
ROCK	A7B A82		

DRG. PERTAINS TO

SI-MO-C-5
SI-MO-4-5
D36565
D69288

DESIGNED BY
E.A.R. M.L.K.

SUBMITTED
W. J. V. Smith

MADE AND TEST. U. S. A.
APPROVED BY CHIEF OF THE
BUREAU OF ORDNANCE
W. J. V. Smith
MADE AND TEST. U. S. A.
ORDNANCE DEPT. U. S. A.

LATCH (B)B437-2
STEEL WD 3415
FINISH 7/64 ± .04

NOTE: UNLESS OTHERWISE SPECIFIED
CORNERS .06R. +.01

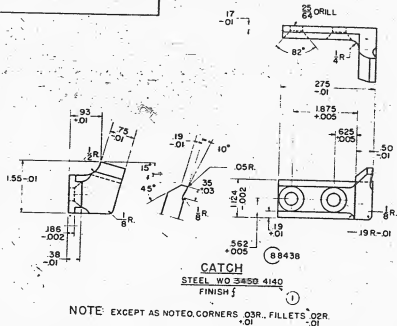
SUPERSEDES OLD TRACING B8437
UNDER REVISION DATE OF MARCH 7, 1941

SCALE 1/2" = 1" B 8437

MICROFILM - A 44 -

26

HEAT TREATMENT AND FINAL FINISH
HEAT TREAT



NOTE: EXCEPT AS NOTED, CORNERS .03R, FILLETS .02R.

PHYSICAL PROPERTIES		DECEMBER 22, 1938
TEMP		REVISED TO
T.S.		11-15-42
T.E.		
RED		
HT		
RR		
AGGR	C 43	
	C 48	

LOW PERMANENT

51-100-5

W.M.B. I.R. J.L.

CH. BY 1938

W.M.B.

J.L.

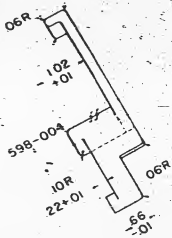
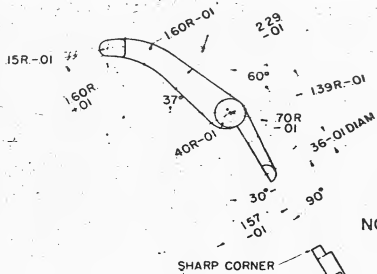
SCALE: 1/8" = 1" 88438

MICROFILM - A 44 - 27

CARBURIZE TO DEEP
FILE HARD



50-02



LEVER (B8443)
STEEL WD 3415
FINISH ζ

NOTE: EXCEPT AS NOTED, CORNERS .03R, FILLETS .02R

SCALE

B8443

VP	
TS	
EL	
REC	
MT	
HW	
SCL	
LC	

DRG PE
51-100
51-104

WSS	I
CR	CR
<i>WMA</i>	
<i>C.V.</i>	

MICROFILM - A 44 -



HEAT TREATMENT & FINAL FINISH

PHYSICAL PROPERTIES DECEMBER 22, 1938

PHYSICAL PROPERTIES	REVISIONS
V.P.	3-15-41
T.S.	5-17-41
R.L.D.	6-26-41
ST.	8-26-41
ROCK.	
TEN.	

DRG. PERTAINS TO

SI-100
SI-104
SI-106

OR MODEL DESIGNATION

OR NAME OF MANUFACTURER

NOTE -- MARKING ON LOWER HALF FOR M6 GUNS



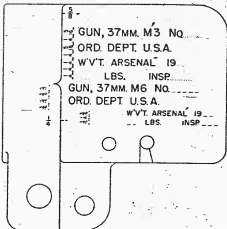
DIR OR MAX
DIR OR MIN

MUZZLE MARKING

VERTICAL AND HORIZONTAL V-SHAPED
LINES .04 WIDE .03 DEEP



CENTER-OF-GRAVITY MARKING



BREECH MARKING

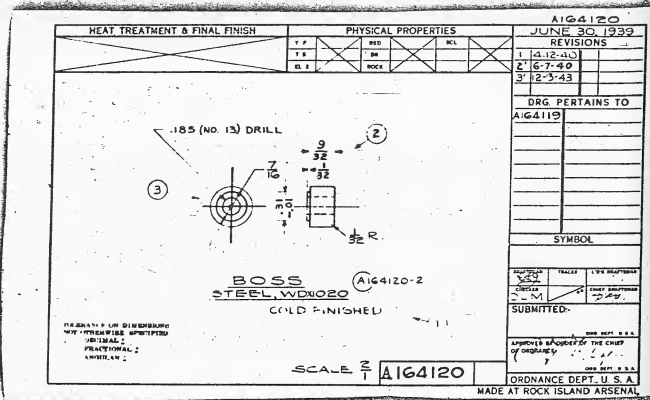
GUN, 37MM. M3 NO. _____
ORD. DEPT. U.S.A.
WVT. ARSENAL 19 _____
LBS. INSP. _____
GUN, 37MM. M6 NO. _____
ORD. DEPT. U.S.A.
WVT. ARSENAL 19 _____
LBS. INSP. _____

SYMBOL

DATE	BY	CHKD.
DATE	BY	CHKD.
<p><i>W. J. ...</i></p>		
<p>ENL. DIV. DEPT. OF ARMY</p>		
<p>HEADQUARTERS ARMY OF THE UNITED STATES</p>		
<p>WASHINGTON, D. C.</p>		

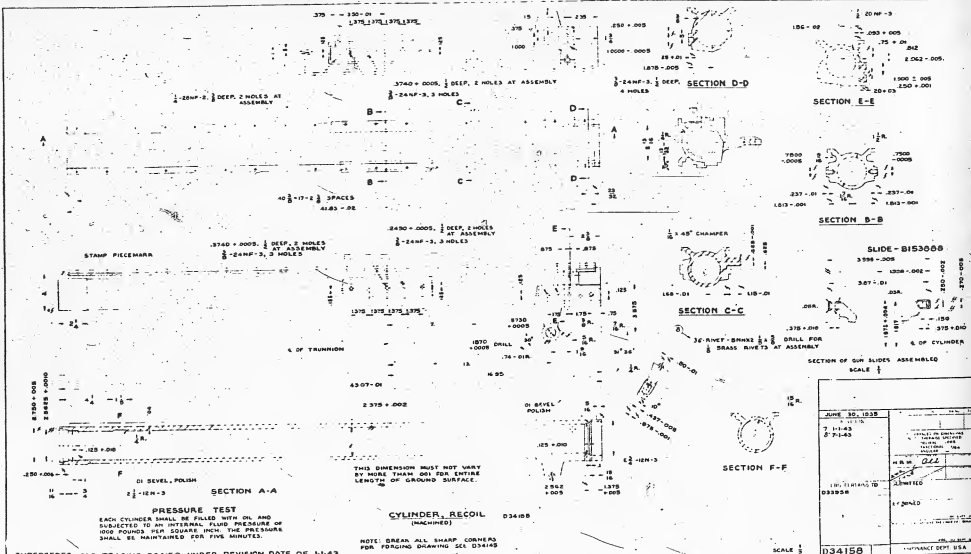
SCALE 1/4" = 1" C 70402

MICROFILM - A 44 - 4.5



MICROFILM - A 44 -

7



SUPERSEDES OLD TRACING 034100, UNDER REVISION DATE OF 1-1-63.

PRESSURE TEST
EACH CYLINDER SHALL BE FILLED WITH OIL AND SUBJECTED TO AN INTERNAL FLUID PRESSURE OF 1000 POUNDS PER SQUARE INCH. THE PRESSURE SHALL BE MAINTAINED FOR FIVE MINUTES.

JUNE 30, 1958	
7 11-63	APPROVED
8 71-63	DESIGNED
H. R. W. <i>all</i> 101-71 HEADS TO 034100 1-24-63 101-71 HEADS TO 034100 1-24-63	
034100	CONTRACT DEPT USA



SECTION A-A



SLEIGH
WELPER CONSTRUCTION D32880

SUPERSEDES OLD DRAWING D32850 UNDER REVISION DATE OF 1-1-43

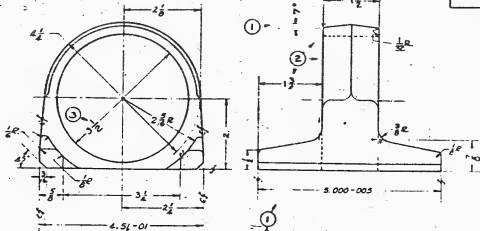
0 2 4 6 8 10 12 14 16 18 20 22 INCHES

JUNE 30 1938	
REVISIONS	
2	REVISED TO SHOW CORRECTIONS IN PART OF DRAWING MADE BY ENGINEER G.M. <i>CSJ</i>
DRG. RETURNED TO	SUBMITTED
D32880	APPROVED
	DATE
	BY
	FOR
	OF
	BY
	DATE
D32850	ORDINANCE DEPT. OF

MICROFILM - A44 - 111

HEAT TREATMENT AND FINAL FINISH

THESE DRAWINGS ARE THE PROPERTY OF THE U.S. GOVERNMENT AND ARE TO BE RETURNED TO THE OFFICE OF ORDNANCE DEPT. OF ARMY



YOKE (B) 3366
STEEL, W315
AS FORGED

SCALE | B153666

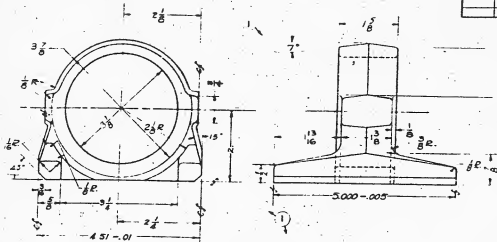
PHYSICAL PROPERTIES	JUL 20 1952
REVISIONS	
APP	1 4-12-42
DES	2 3-14-41
EX. 1	3 4-28-42
CHK	
APP	
DES	
EX. 1	
CHK	
APP	
DES	
EX. 1	

DRG. PERTAINS TO	
D32030	
137839	
D30049	

SYMBOL	
DRG. NO.	
REV.	
DATE	
BY	
CHKD.	
APP.	
DES.	
EX. 1	
CHK.	
APP.	
DES.	
EX. 1	

APP. BY ORDER OF THE CHIEF OF ORDNANCE
ORDNANCE DEPT. U.S.A.

HEAT TREATMENT AND FINAL FINISH



YOKE B153667
 STEEL WD 3/15
 AS FORGED

SCALE 1/4" = 1"

JUNE 30, 1933

PHYSICAL PROPERTIES		REVISIONS	
Y.P.		1	A. (7.20)
T.S.			
EL. 2			
RED			
DR			
ROCK			
WCL			

DRG PERTAINS TO

D32830

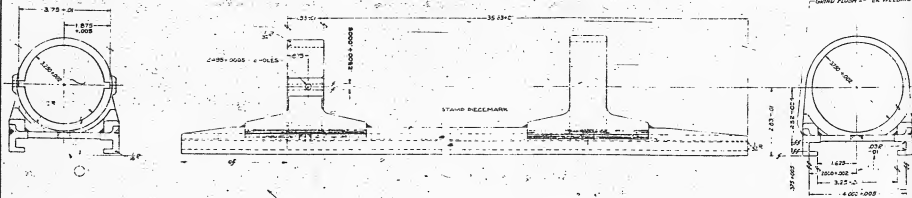
SYMBOL

APPROVED BY CHIEF OF THE BUREAU OF ARMS
 17 JUN 1933
 SUBMITTED.

ORDNANCE DEPT. U. S. A.

MADE AT ROCK ISLAND ARSENAL

PHYSICAL PROPERTIES	
11	
12	
13	
14	
15	
16	
17	
18	
19	
20	



SLFIGH (32285)
 NOTE: BREAK ALL SHARP CORNERS

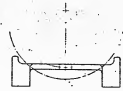
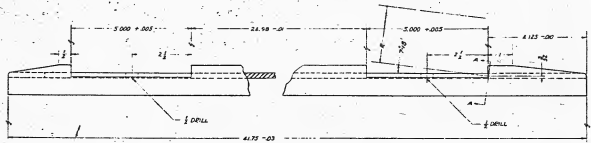
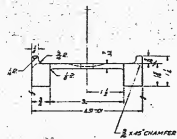
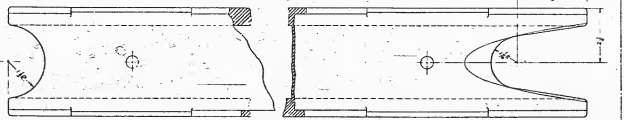
NOTE
 SLFIGH, WELDED 12285

DATE	BY	REVISION	REVISION	REVISION	REVISION
JULY 15, 1953	EDWARDS				
DATE	BY	REVISION	REVISION	REVISION	REVISION
8.6.53	STW				
DATE	BY	REVISION	REVISION	REVISION	REVISION
10/26/54	STW				
DATE	BY	REVISION	REVISION	REVISION	REVISION
10/27/54	STW				
DATE	BY	REVISION	REVISION	REVISION	REVISION
DATE	BY	REVISION	REVISION	REVISION	REVISION
DATE	BY	REVISION	REVISION	REVISION	REVISION

SCALE 1 D3285/1 ONTHANCE DEPT. W & A
 MADE BY FIDUCY ELECTRIC FARMING

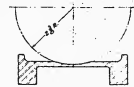
MICROFILM - A44 - 11A

PARTS PROFILES	
1	✓
2	✓
3	✓
4	✓
5	✓
6	✓
7	✓
8	✓
9	✓
10	✓



VIEW B-B

PLATE D32870
 STEEL, UNSUR OR HD3030
 A¹ ROLLED
 P¹ - 211 C



SECTION AA

REVISIONS OF DRAWINGS
 NUMBER OF REVISIONS
 DATE
 DRAWN BY
 CHECKED BY

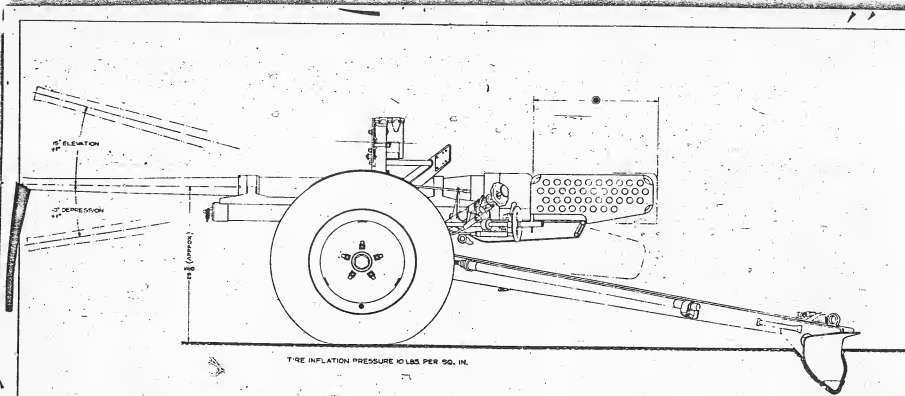
DATE	BY	REVISIONS
11-17-54	J. J. J.	1
11-17-54	J. J. J.	2
11-17-54	J. J. J.	3
11-17-54	J. J. J.	4
11-17-54	J. J. J.	5
11-17-54	J. J. J.	6
11-17-54	J. J. J.	7
11-17-54	J. J. J.	8
11-17-54	J. J. J.	9
11-17-54	J. J. J.	10

SYMBOL	DESCRIPTION
1	DRG PERTAINS TO
2	DATE
3	SCALE
4	SUBMITTED
5	EXAMINED
6	APPROVED BY
7	DESIGNED BY
8	CONFORMANCE DEPT. S.E.
9	MADE AT ROCK ISLAND

SCALE 1/2"

D32870

MICROFILM - A 44 - 115



TIRE INFLATION PRESSURE 10 LBS PER SQ. IN.

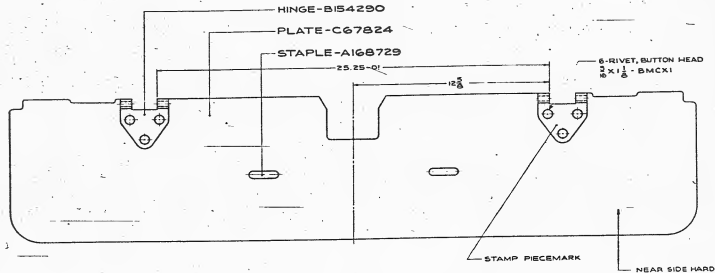
NOTE - MAX TRAVERSE 30° LEFT HAND - 30° RIGHT HAND

- ⊙ 6-IN NORMAL RECOIL WITH GAS DEFLECTOR
- ⊙ 10-IN NORMAL RECOIL WITHOUT GAS DEFLECTOR



JUNE 30, 1939	
REVISIONS	NO. OF CHANGES
1	10512
2	
3	
4	
5	
6	
7	
8	
9	
10	
11	
12	
13	
14	
15	
16	
17	
18	
19	
20	
21	
22	
23	
24	
25	
26	
27	
28	
29	
30	
31	
32	
33	
34	
35	
36	
37	
38	
39	
40	
41	
42	
43	
44	
45	
46	
47	
48	

ONE REMAINS TO
 DESIGNED BY
 DRAWN BY
 CHECKED BY
 SUBMITTED BY
 APPROVED BY
 DATE



PHYSICAL PROPERTIES		REVISIONS	
Y.P.	1 (11-25-41)		
T.S.	2 (1-1-44)		
DL			
RES.			
HR.			
MOUL.			
ML			

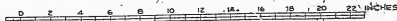
DRG. PERTAINS TO

034104

054240

APRON C68288

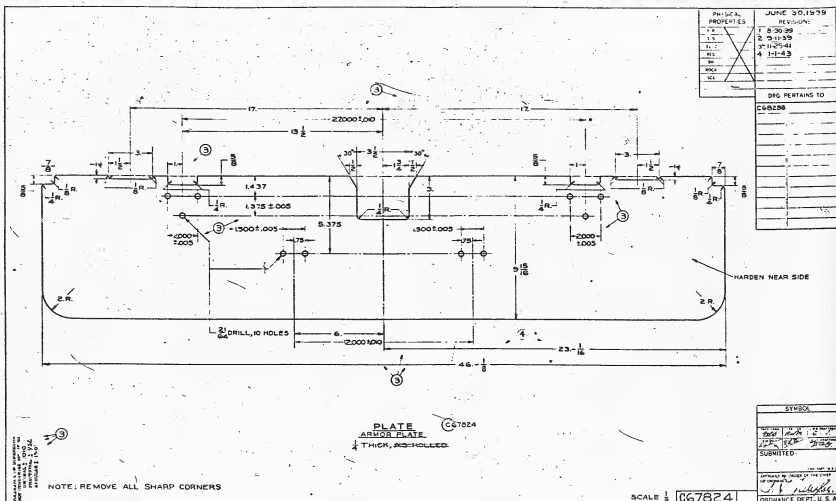
AVAILABLE IN STEELWORK
 FOR OBSOLETE SPECIFICATIONS
 PHYSICAL PROPERTIES 2
 APRIL 2



C68288

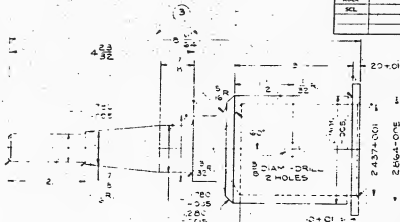
STAMP	
<input checked="" type="checkbox"/>	DESIGNED
<input checked="" type="checkbox"/>	CHECKED
<input checked="" type="checkbox"/>	TESTED
<input checked="" type="checkbox"/>	APPROVED
SUBMITTED	
DATE	
BY	
<small>ORDNANCE DEPT., U. S. A.</small> MADE AT FLOCK ISLAND A. CANAL.	

MICROFILM - A44 - 107



MICROFILM - A 44 - 130

HEAT TREATMENT AND FINAL FINISH



PHYSICAL PROPERTIES

Y P	35-50S*
T S	50-60S*
EL P	25
RED	45
BR	
ROCK	
SCL	

JUNE 30, 1939
REVISIONS

1	4-12-40
2	4-14-41
3	7-1-49

DRG PERTAINS TO

034063

SYMBOL

DESIGNED BY *WJW* CHECKED BY *DLM*
 DRAWN BY *DLM* SUBMITTED BY *DLM*
REV. 1-1-33

SPINDLE
STEEL W.C. 1939

(B) 4-320

SCALE

B157329

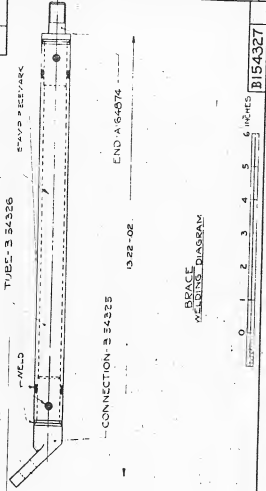
APPROVED BY ORDER OF THE CHIEF OF ORDNANCE
REV. 1-1-33
 ORDNANCE DEPT. U. S. A.
 MADE AT ROCK ISLAND ARSENAL

MICROFILM - A 44 - 1 1 7

HEAT TREATMENT AND FINAL FINISH

PHYSICAL PROPERTIES

T.P.	
A. 1	
HR	
BR	
WEL	
SL	



JUNE 30, 1953

REVISED

17-50-41

DIRC PERTAINS TO

D-22646

D-24025

SYMBOL

D.L.M. REVISIONS

A.V.R. SUBMITTED

APPROVED BY THE CHIEF OF GENERAL INVESTIGATION

DATE: MAY 2, 1953

BY: W.H. HALL

ORDNANCE DEPT. U. S. A.

MADE AT ROCK ISLAND

B154327

MICROFILM - A 44 - 152

HEAT TREATMENT AND FINAL FINISH

PHYSICAL PROPERTIES

T.P.	
A. 1	
HR	
BR	
WEL	
SL	

JUNE 30, 1953

REVISED

17-50-42

DIRC PERTAINS TO

D-24327

SYMBOL

D.L.M. REVISIONS

A.V.R. SUBMITTED

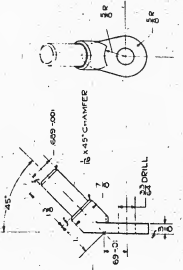
APPROVED BY THE CHIEF OF GENERAL INVESTIGATION

DATE: MAY 2, 1953

BY: W.H. HALL

ORDNANCE DEPT. U. S. A.

MADE AT ROCK ISLAND



CONNECTION
STEEL WOLVES
AS FORGED

①

B154325

SCALE: 1

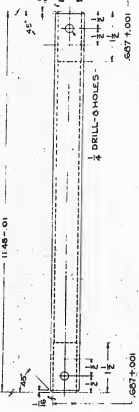
MICROFILM - A 44 - 152

HEAT TREATMENT AND FINAL FINISH

PHYSICAL PROPERTIES

JUNE 30, 1939

TEMP.	TEST	RESULT
YIELD		
TENSILE		
ELONG.		
HARD.		
IMP.		
BOUR.		
WAL.		



①
 TUBE
 COLD DRAWN SEAMLESS STEEL TURNING W.D.10.0
 OUTSIDE DIAM. 1.5715, WALL THICKNESS .025
 607 ± 0.001

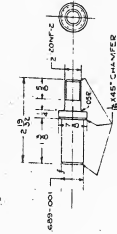
SCALE - B154326

 DIRG. PERTAINS TO B154327
 APPROVED BY OFFICE OF THE CHIEF ORDNANCE DEPT. U.S.A.
 MADE AT ROCK ISLAND ARSENAL

MICROFILM - A 44 - 165

HEAT TREATMENT & FINAL FINISH

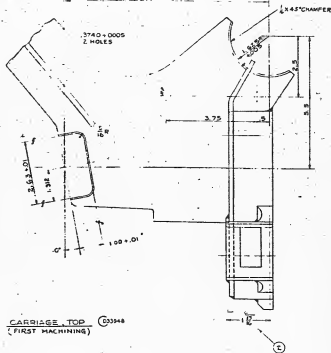
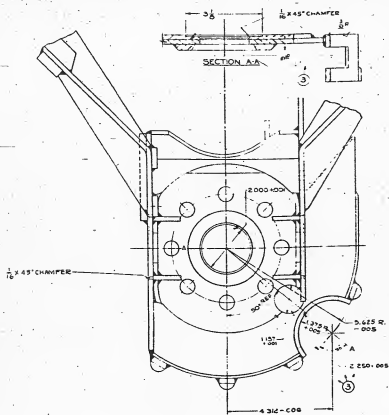
A 164874

 JUN 30 1939
 REVISIONS
 1 1 1 1 1 1


END
 STEEL W.D.10.0
 COLD FINISHED
 ①

SCALE - A 164874

 DIRG. PERTAINS TO A164875
 APPROVED BY OFFICE OF THE CHIEF ORDNANCE DEPT. U.S.A.
 MADE AT ROCK ISLAND ARSENAL



CARRIAGE TOP (FIRST MACHINING) G3348

STANDARD OF DIMENSIONS
UNLESS OTHERWISE SPECIFIED
FRACTIONS IN PARENTS
DECIMALS IN PARENTS

ALICE S. V. J.		REVISED	DATE	BY	APPROVED	DATE
REVISIONS						
1	INITIALS					
2	DATE					
3	BY					
DRG. PERTAINS TO		D.L.M.		DATE		1974
D33948		BY		DATE		
SUBMITTED		BY		DATE		
DESIGNED		BY		DATE		
CHECKED		BY		DATE		
DRAWN		BY		DATE		
MATERIAL		BY		DATE		
FINISH		BY		DATE		
TOLERANCES		BY		DATE		
SCALE		BY		DATE		
D33948		BY		DATE		
OPERANCE DEPT. 8 S		BY		DATE		
MADE AT BOAC BOSTON		BY		DATE		

MICROFILM - A 44 - 217

32 DRILL - 1/2" DIA.
CLAMPED 2 HOLES

11 DRILL - 3 HOLES

STAMP PIECE MARK

NOTE:
BREAK ALL SHARP CORNERS

24NF-2, 1/2 DEEP-3 HOLES

22 GUARANTEED
CLEARANCE

45° 21'

CARRIAGE, TOP
SECOND MACHINING 033950
FOR OTHER VIEWS SEE 033950 & 033953
FOR FIRST MACHINING SEE 033945
FOR HELIX DIAGRAMS SEE 033945, 033946 & 033949

SECTION A-A

PERSEDES OLD TRACING 033950. UNDER REVISION DATE OF 1-1-43

SCALE

17500-0005
2 1/2
7.45 - 01

APR 30 1935

7 17-43
8 8-23
9 8-23

DESIGNED BY
033854
040784

D.L.M. *all*

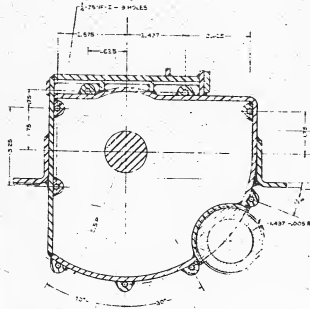
CHECKED BY

EXAMINED BY

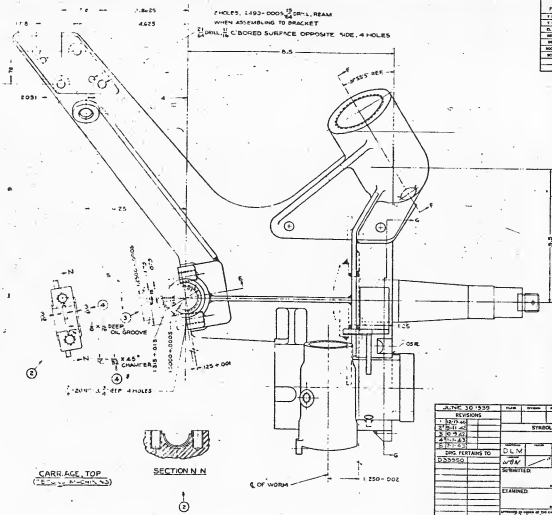
1033950

CRDANCE DEPT USA

MICROFILM - A44 - 218

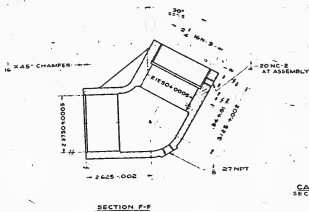
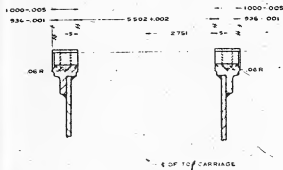
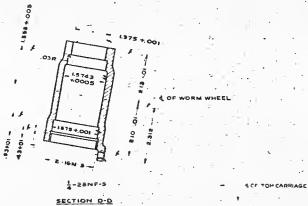
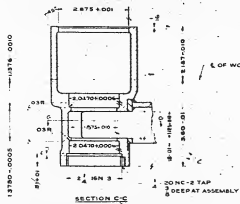
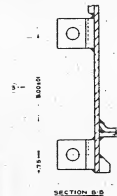


5140 O.G.
 MATERIAL & FINISH
 AS SHOWN ON DRAWING
 UNLESS OTHERWISE SPECIFIED
 SEE LAST PAGE
 NOTE: BREAK ALL SHARP CORNERS



PHYSICAL PROPERTIES	
TEMP.	
TENSILE STRENGTH	
ELONGATION	
HARDNESS	
IMPACT	
THERMAL EXPANSION	
CORROSION	
WEAR	

DATE	BY	REVISION	DESCRIPTION
11-27-54	...	1	...
12-1-54	...	2	...
1-15-55	...	3	...
3-24-55	...	4	...
5-12-55	...	5	...
ONE PERTAINS TO	D.L.W.
DATE	11/27
DRAWN
CHECKED
APPROVED
EXAMINED			
DATE			
11/27			
039951			
ORDINANCE DEPT. U.S.A.			
MADE AT ROCK ISLAND Arsenal			



CARRIAGE TOP
SECOND MACHINING

5/27/44

CLEARANCE REQD
FOR TRAVERSING BAR



SECTION G-G

STANDARD OF FINISHES
UNLESS SPECIFIED
SEE DRAWING
SPECIFICATIONS

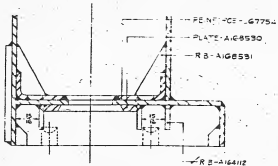
NOTE-BREAK ALL SHARP CORNERS

JUNE 30, 1935		DATE	BY	APPROVED	REVISION
DESIGNED	BY	DATE	BY	DATE	
CHECKED	BY	DATE	BY	DATE	
SYMBOL					
1	2	3	4	5	6
7	8	9	10	11	12
ONE PARTS TO					
SUBMITTED					
EXAMINED					
DATE					
BY					
DATE					
BY					
DATE					
BY					
DATE					

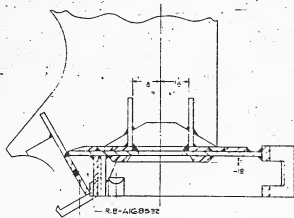
SCALE: 133953

ORION DIE & S.A.
MADE IN ROCK HAVEN, W.VA.

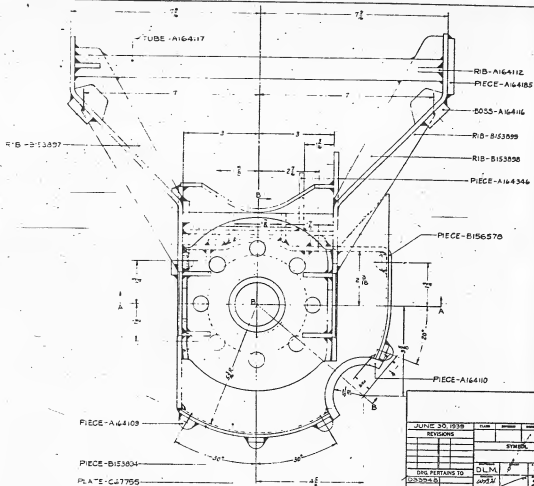
MICROFILM - A 44 - 220



SECTION A-A




SECTION B-B

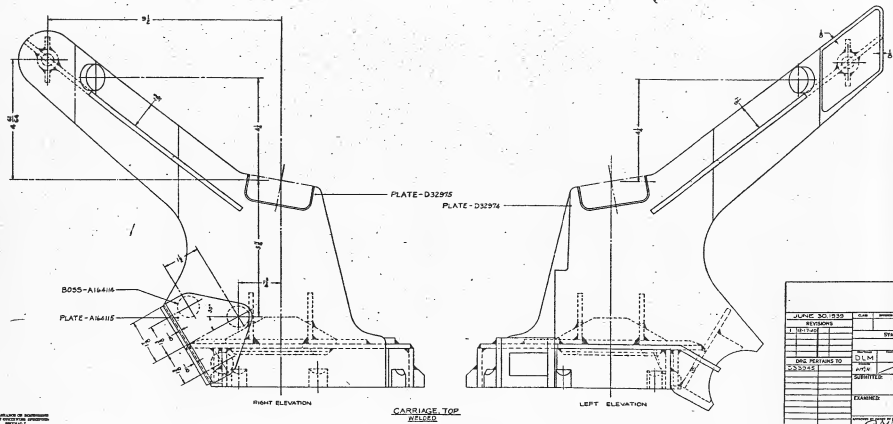


CARRIAGE TOP
 DRAWN D33945
 FOR OTHER VIEWS SEE C-3248

0 1 2 3 4 5 6 7 8 9 10 INCHES

JULIE 30 1958	FILED	INDEXED	SEARCHED	FILED
RECORDS				
STANDARD				
DIA PARTS TO		D.L.M.	IN PARTS	
D33945		ADJ/3	FOR PARTS	
SUBMITTED		EXAMINED		
D33945				
 COMMAND, DEPT. U.S.A. MADE AT ROCK ISLAND ARMOY				

MICROFILM - A 44 - 223



JULIUS 501850	CHK	DESIGN	DATE
REVISIONS			
1	1872/45		SYNKA
ONE RETURNS TO			
533326	D L M	DATE	20
SUBMITTED			
EXAMINED			
D 33946			
OVERHAUL DEPT. 6 & 8			
MADE AT ROCK ISLAND 18			

REPRODUCTION OF INFORMATION
 NOT PROTECTED BY PATENT
 RIGHTS

MICROFILM - A 44 - 212

Fig.
Part
QTY
REVISION
BY
DATE
APP
DATE
SCALE

PLATE
LOW ALLOY STEEL, GRADE 2 (D 32974)
 $\frac{1}{2}$ " THICK, NORMALIZED

RETRACTED FROM OLD TRACKING
WITHOUT CHANGE 7-0-43

SCALE 1"

JUNE 30 1953	
2 72740	
	ISSUED TO NOT RETURN
	LEK <i>pfh</i>
	DATE
D33062 D33946	ISSUED TO BY DATE
	FINISH
	TYPE OF FINISH
	REVISION
	ORGANIZATION DEPT.

MICROFILM - A44 - 246

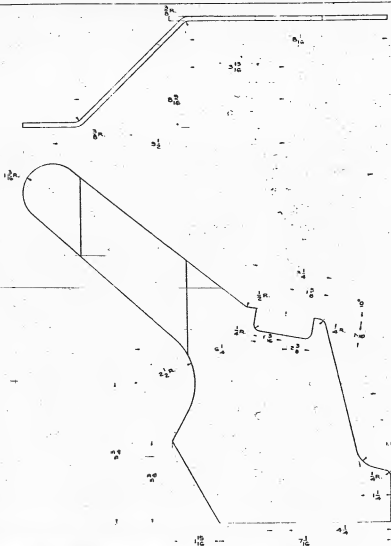


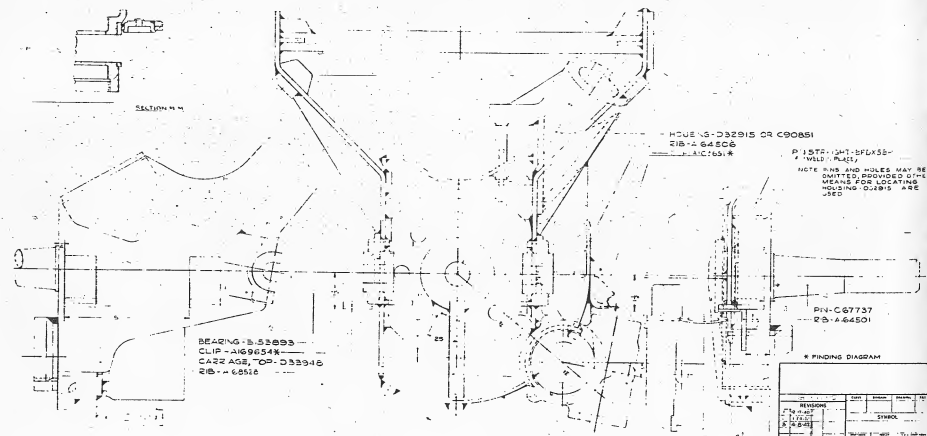
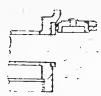
PLATE
LOW ALLOY STEEL, GRADE 50
 $\frac{1}{8}$ " THICK, NORMALIZED

D32975
RETRACED FROM OLD TRACING
WITHOUT CHANGE 7-10-43

SCALE 1

JUNE 30, 1955	
1-A-1246	LEK. GW
035001	LABORERS
035046	LABORERS
<i>Johnnie E. Smith</i>	
D32975	SPONSOR: DEPT. OF A.

MICROFILM - A 44 - 21.7



BEARING-B 53893
CLIP-A169654K
CARTRIDGE, TOP-D 33948
RIB-A 68516

HOUSING-D 32915 OR C 90851
RIB-A 64506
PIECE-A 16529

P. 15TR-101-SFDX5B
WELD PLACES
NOTE RIBS AND HOLES MAY BE
OMITTED PROVIDED OTHER
MEANS FOR LOCATING
HOUSING D 32915 ARE
USED

PIN-C 67737
RIB-A 64501

CARRIAGE TOP
(SECOND A4-356)

CASE, GEAR-D 22899 OR C 91505
PIECE-A 16529

* FINDING DIAGRAM

REVISION	DATE	REASON	BY	CHKD.
1				
2				
3				
4				
5				
6				
7				
8				
9				
10				
11				
12				
13				
14				
15				
16				
17				
18				
19				
20				
21				
22				
23				
24				
25				
26				
27				
28				
29				
30				
31				
32				
33				
34				
35				
36				
37				
38				
39				
40				
41				
42				
43				
44				
45				
46				
47				
48				
49				
50				
51				
52				
53				
54				
55				
56				
57				
58				
59				
60				
61				
62				
63				
64				
65				
66				
67				
68				
69				
70				
71				
72				
73				
74				
75				
76				
77				
78				
79				
80				
81				
82				
83				
84				
85				
86				
87				
88				
89				
90				
91				
92				
93				
94				
95				
96				
97				
98				
99				
100				

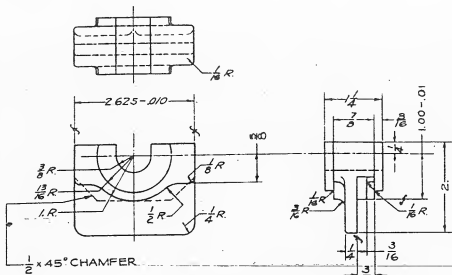
APPROVED FOR RELEASE
ON 08-26-2008
BY CIA/RDP
REF ID: A66522

0 1 2 3 4 5 6 7 8 9 10 11 12 INCHES

033949 DISCORDANCE DEPT. W. S. A. MADE AT BOSTON ARSENAL

MICROFILM - A 44 - 010

HEAT TREATMENT AND FINAL FINISH



BEARING
STEEL W3115
AS FORGED

B153893

1

2

PHYSICAL PROPERTIES	JUNE 30, 1939	
	REVISIONS	
Y. P.	1	4-12-40
Y. S.	2	8-30-40
EL. 2		
RED.		
BR.		
MOCK.		
SCL.		

DRG. PERTAINS TO

D33085
D33949
D50053

SYMBOL

APPROVED: *W.J.H.* TENSILE: *D.W.* LIVE SHEAR: *D.W.*
DESIGNED: *R.A.W.E.* CHEF. SHEAR: *D.W.*
SUBMITTED:

ORD. DEPT., U.S.A.
APPROVED FOR THE CORP:
J.V. Jillette
ORD. DEPT., U.S.A.
ORDNANCE DEPT., U.S.A.
MADE AT ROCK ISLAND ARSENAL

SCALE

B153893

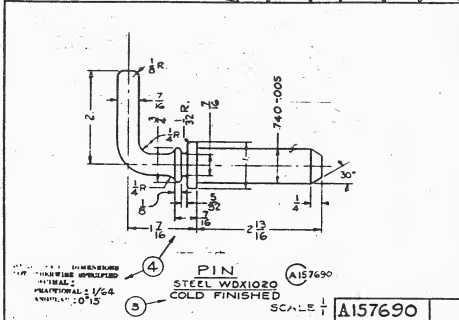
MICROFILM 14 055

HEAT TREATMENT & FINAL FINISH

PHYSICAL PROPERTIES		
V. P.	RES	RCL
T. S.	RE	
EL. 2	ROCK	

A157690
F.E.D. 14, 1936

REVISIONS	
2	10-9-36
3	4-12-40
4	11-20-40



DIMENSIONS SHOWN UNLESS
 OTHERWISE SPECIFIED
 TOLERANCES: 1/64
 UNLESS OTHERWISE SPECIFIED

PIN
 STEEL WDX1020
 COLD FINISHED

A157690

SCALE 1/1

A157690

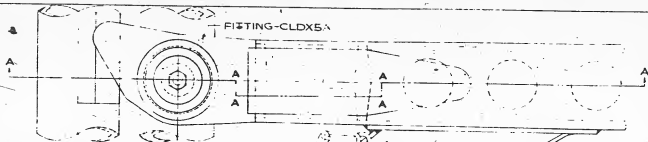
DRG. PERTAINS TO
D144900

SYMBOL
OAP 2670

APPROVED	TRACED	1 23
CHECKED	24	ORIG. DRAWING

SUBMITTED:

APPROVED BY ORDER OF THE CHIEF,
 OF ENGINEERS
 ORDNANCE DEPT. U. S. A.

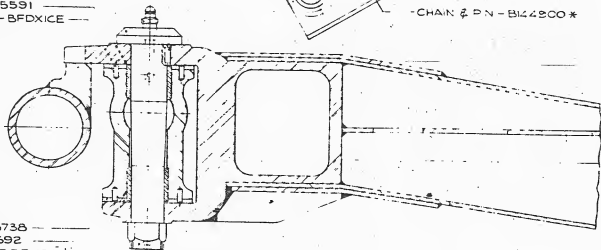


PHYSICAL PROPERTIES		REVISIONS	
TP	3	3	25-42
TS	A	4	10-42
EL	5	1	8-43
RD			
HW			
WCK			
REL			

KEY - A168688
 FITTING - A168822
 PIN - B156552
 BUSHING - B195591
 P/N, STRAIGHT - BFDXICE

LOCATE AT ASSEMBLY

-CHAIN & PN - B142800 *



WASHER - A168738
 BUSHING - B195592
 NUT, CASTLE - BBF X2C
 PIN, COTTER - BFAFIXK

SECTION A-A-A-A-A

CONNECTION, TRAIL

SUPERSEDES OLD TRACING C67841,
 UNDER REVISION DATE OF 3-25-42

0 1 2 3 4 5 6 7 8 9 10 11 12 13 14 15 16 17 18 19 20 21 22 23 24 25 26 27 28 29 30 31 32 33 34 35 36 37 38 39 40 41 42 43 44 45 46 47 48 49 50 51 52 53 54 55 56 57 58 59 60 61 62 63 64 65 66 67 68 69 70 71 72 73 74 75 76 77 78 79 80 81 82 83 84 85 86 87 88 89 90 91 92 93 94 95 96 97 98 99 100 101 102 103 104 105 106 107 108 109 110 111 112 113 114 115 116 117 118 119 120 121 122 123 124 125 126 127 128 129 130 131 132 133 134 135 136 137 138 139 140 141 142 143 144 145 146 147 148 149 150 151 152 153 154 155 156 157 158 159 160 161 162 163 164 165 166 167 168 169 170 171 172 173 174 175 176 177 178 179 180 181 182 183 184 185 186 187 188 189 190 191 192 193 194 195 196 197 198 199 200 201 202 203 204 205 206 207 208 209 210 211 212 213 214 215 216 217 218 219 220 221 222 223 224 225 226 227 228 229 230 231 232 233 234 235 236 237 238 239 240 241 242 243 244 245 246 247 248 249 250 251 252 253 254 255 256 257 258 259 260 261 262 263 264 265 266 267 268 269 270 271 272 273 274 275 276 277 278 279 280 281 282 283 284 285 286 287 288 289 290 291 292 293 294 295 296 297 298 299 300 301 302 303 304 305 306 307 308 309 310 311 312 313 314 315 316 317 318 319 320 321 322 323 324 325 326 327 328 329 330 331 332 333 334 335 336 337 338 339 340 341 342 343 344 345 346 347 348 349 350 351 352 353 354 355 356 357 358 359 360 361 362 363 364 365 366 367 368 369 370 371 372 373 374 375 376 377 378 379 380 381 382 383 384 385 386 387 388 389 390 391 392 393 394 395 396 397 398 399 400 401 402 403 404 405 406 407 408 409 410 411 412 413 414 415 416 417 418 419 420 421 422 423 424 425 426 427 428 429 430 431 432 433 434 435 436 437 438 439 440 441 442 443 444 445 446 447 448 449 450 451 452 453 454 455 456 457 458 459 460 461 462 463 464 465 466 467 468 469 470 471 472 473 474 475 476 477 478 479 480 481 482 483 484 485 486 487 488 489 490 491 492 493 494 495 496 497 498 499 500 501 502 503 504 505 506 507 508 509 510 511 512 513 514 515 516 517 518 519 520 521 522 523 524 525 526 527 528 529 530 531 532 533 534 535 536 537 538 539 540 541 542 543 544 545 546 547 548 549 550 551 552 553 554 555 556 557 558 559 560 561 562 563 564 565 566 567 568 569 570 571 572 573 574 575 576 577 578 579 580 581 582 583 584 585 586 587 588 589 590 591 592 593 594 595 596 597 598 599 600 601 602 603 604 605 606 607 608 609 610 611 612 613 614 615 616 617 618 619 620 621 622 623 624 625 626 627 628 629 630 631 632 633 634 635 636 637 638 639 640 641 642 643 644 645 646 647 648 649 650 651 652 653 654 655 656 657 658 659 660 661 662 663 664 665 666 667 668 669 670 671 672 673 674 675 676 677 678 679 680 681 682 683 684 685 686 687 688 689 690 691 692 693 694 695 696 697 698 699 700 701 702 703 704 705 706 707 708 709 710 711 712 713 714 715 716 717 718 719 720 721 722 723 724 725 726 727 728 729 730 731 732 733 734 735 736 737 738 739 740 741 742 743 744 745 746 747 748 749 750 751 752 753 754 755 756 757 758 759 760 761 762 763 764 765 766 767 768 769 770 771 772 773 774 775 776 777 778 779 780 781 782 783 784 785 786 787 788 789 790 791 792 793 794 795 796 797 798 799 800 801 802 803 804 805 806 807 808 809 810 811 812 813 814 815 816 817 818 819 820 821 822 823 824 825 826 827 828 829 830 831 832 833 834 835 836 837 838 839 840 841 842 843 844 845 846 847 848 849 850 851 852 853 854 855 856 857 858 859 860 861 862 863 864 865 866 867 868 869 870 871 872 873 874 875 876 877 878 879 880 881 882 883 884 885 886 887 888 889 890 891 892 893 894 895 896 897 898 899 900 901 902 903 904 905 906 907 908 909 910 911 912 913 914 915 916 917 918 919 920 921 922 923 924 925 926 927 928 929 930 931 932 933 934 935 936 937 938 939 940 941 942 943 944 945 946 947 948 949 950 951 952 953 954 955 956 957 958 959 960 961 962 963 964 965 966 967 968 969 970 971 972 973 974 975 976 977 978 979 980 981 982 983 984 985 986 987 988 989 990 991 992 993 994 995 996 997 998 999 1000

C67841

FINDING DIAGRAM SYMBOL

SEARCHED	INDEXED	SERIALIZED	FILED
SUBMITTED			

APPROVED BY: [Signature]
 SPECIALIST IN PRODUCTION CONTROL

ORDNANCE DEPT. U. S. A.
 MADE AT ROCK ISLAND ARSENAL

MICROFILM - A44 - 077

CUP, DL - CLPX2A

- BEARING THRUST - A18665
- BUSHING - A18271B
- GEAR, S-SHAFT - B186699
- NUT - B18627

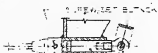
SCREW SET - BCTX18B

SUPPORT - C88000

PIN, STRAIGHT - BFX01XC

KEY - B36X1 - 3/32 SQUARE X 1/2 LONG

SECTION A-A



EYE - A18427B
PLUNGER - A184271

SECTION B-B

- SCREW SET - TOP - C
- BUSHING - B18281B
- PIN, STRAIGHT - BFX01DP
- SPRING LOCKING - A18976B
- COLLAR - A182871
- NUT - A 18267
- SCREW, W/M.C.H. - BCTX3CD
- KEY - B18427E
- PIN, HOL.S. - BFXEQ

KNOS - B18619
PLUNGER - A18618

DISK - A18282
PIN, STRAIGHT - BFX02AC
PIN - A 18125
ROLLER - A18422
PIN, COTTER - BFX01CC

PIN, HOL.S. - BFX01AH
PIN, COTTER - BFX01BB

CONTROLS, ELEVATING AND FIRING 3340F4

REF ID	REV	DATE	BY	CHKD
	REVISED			
	LIBRARY			
	COLLECTOR			
	FILE			
	INDEXED			
	SEARCHED			
	SERIALIZED			
	FILED			
	ENC. CONTAINS TO			
	FOR			
	SUBMITTED			
	REMOVED			
	REPLACED			
	BY ORDER OF THE DIR OF INSP.			
	REMOVED			
	REPLACED			
	BY ORDER OF THE DIR OF INSP.			
	REMOVED			
	REPLACED			
	BY ORDER OF THE DIR OF INSP.			

334054

ORIGINATOR: DEPT. OF THE ARMY
MADE AT ROCK ISLAND ARMO.

MICROFILM - A44 -



SCREW SET - BCTXIAD
(TOP VIEW) (DEPT)
CUBOIL-CLFXZA



BUSHING - A169106
NUT - A168967
COLLAR - A168971
PIN, STRAIGHT - BFDX1DP
SPRING, LOCKING - A169768
SCREW, MACH - BCOX3CD

BEARINGS, THRUST - A168665
BUSHING - A168716
NUT - B166627
CRAP, SPACER - B193888

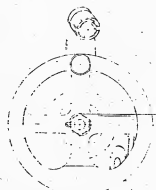
SCREW SET - BCTXIIB



SCREW SET - BCTXIIB
SUPPORT - CDIG5 BX



PIN, COTTER - BFAIXDG
NUT, HEX - BBHXIA
HANDWHEEL - C6G338X



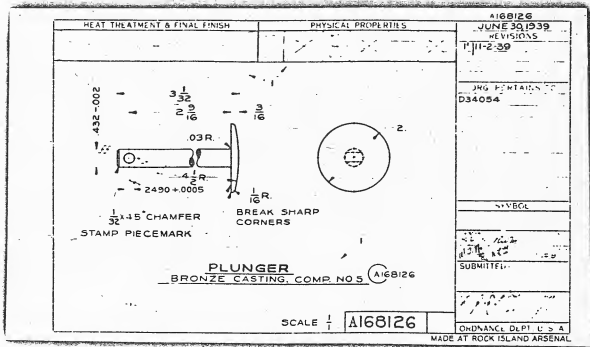
CONTROL ELEMENTS

NOTE: THE DRAWING IS
NOT TO BE USED FOR REPAIRS
UNLESS SPECIFICALLY AUTHORIZED BY THE
ENGINEERING DEPARTMENT.

IS ALTERNATE DESIGN
? FINDING DIAGRAM

OCT 18 1941		REV	ISSUED	BY
REVISIONS	1	2842		
2	3842			
SYMBOL				
DESCRIPTION				
DISEASE TO				
D39436				
SUBMITTED				
EXAMINED				
DATE				
D39449				
ORDNANCE DEPT. U. S. A.				
MADE AT ROCK ISLAND ARSENAL				

MICROFILM - A44 - 286



MICROFILM - A 44 -



HEAT TREATMENT AND FINAL FINISH

~~HEAT TREAT NO. 2~~

②



ALUMINUM ALLOY CASTING, GRADE 90.4
 BRONZE CASTING, COMP 5
 OR MALLEABLE IRON CASTING, TYPE A

B156472

SCALE

PHYSICAL PROPERTIES

Y P
 T S 90000
 EL 7
 RED
 BR
 ROCK
 SKL

JUNE 30, 1939

REVISIONS

1-12-39

2-8-41

DRG PERTAINS TO

SYMBOL

DESIGNED BY
 DRAWN BY
 CHECKED BY
 SUBMITTED

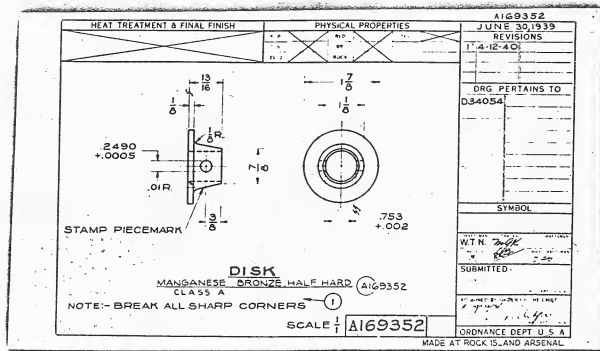
SUBMITTED

APPROVED BY ORDER OF THE CHIEF
 OF ORDNANCE

ORDNANCE DEPT. U. S. A.

MADE AT ROCK ISLAND ARSENAL

B156472

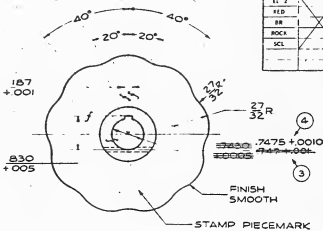
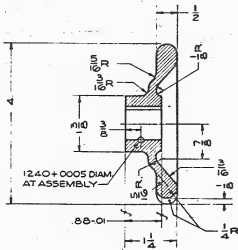


MICROFILM - A 44 -



HEAT TREATMENT AND FINAL FINISH
HEAT TREAT NO: 2

PHYSICAL PROPERTIES		JUNE 30, 1939 REVISIONS	
T P		1	4-12-40
T S	30,000	2	5-4-41
EL 2		3	12-20-41
RED		4	1-1-43
BB			
ROCK			
SCL			



2 — **KNOB**
ALUMINUM ALLOY CASTING, GRADE NO: B156839
1 — MALLEABLE IRON CASTING, TYPE A

TOLERANCE OF DIMENSIONS
NOT OTHERWISE SPECIFIED
DECIMAL :
FRACTIONAL :
ANGULAR :

SCALE 1/8" = 1" B156839

DRG PERTAINS TO

D34054

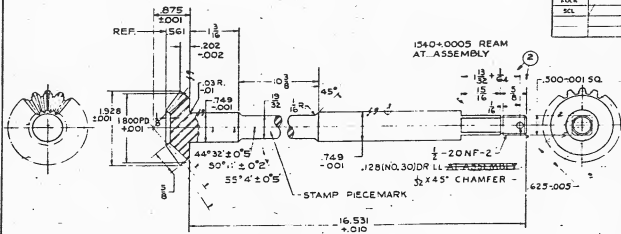
SYMBOL

SUBMITTED

ORDNANCE DEPT U. S. A.
MADE AT R & A ISLAND ARSENAL

MICROFILM - A 44 -

HEAT TREATMENT AND FINAL FINISH



GEAR, SHAFT

STEEL W24140 - COLD FINISHED

18 TEETH, 10 DIAMETRAL PITCH (3142 C P)
 STD 14 1/2° INVOLUTE FORM
 TO MESH WITH GEAR, DEVEL-AIG6G54
 WITH MAX. ALLOWABLE BACKLASH OF .008

Ⓛ B193888

DRAWING IS TO BE APPROVED
 BY ENGINEER OR SPECIFIED
 OFFICIAL -
 PRO-TYPAL - 1/64
 ANGLE 2 1/2°

①

SCALE

B193888

PHYSICAL PROPERTIES	
Y P	
T S	
EL 2	
RHD	
DR	
ROCK	
SCL	

OCT. 18, 1941
 REVISIONS

1 7-18-42
 2 11-10-43

DRG PERTAINS TO

039449

SYMBOL

APPROVED BY ORDER OF THE CHIEF OF ORDNANCE

T M B

DATE OF SUBMISSION

SUBMITTED

APPROVED BY ORDER OF THE CHIEF OF ORDNANCE

DATE OF SUBMISSION

SUBMITTED

APPROVED BY ORDER OF THE CHIEF OF ORDNANCE

DATE OF SUBMISSION

SUBMITTED

APPROVED BY ORDER OF THE CHIEF OF ORDNANCE

DATE OF SUBMISSION

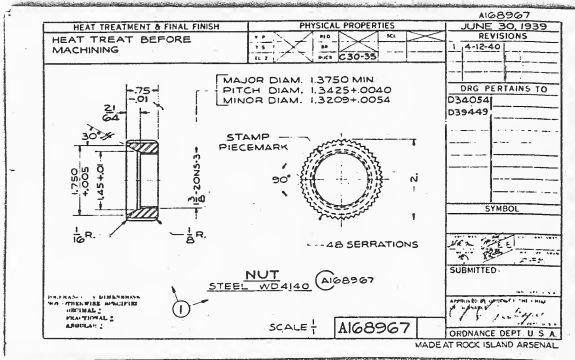
SUBMITTED

ORDNANCE DEPT. U S A

MADE AT PULASKI ISLAND ARSENAL

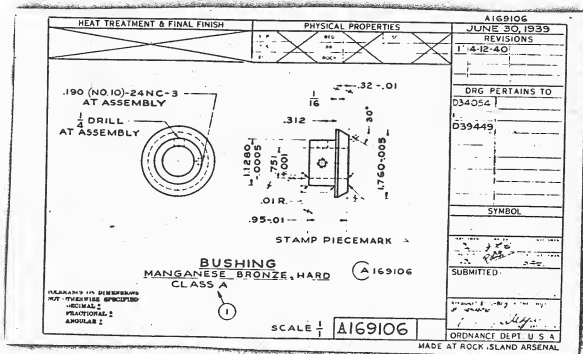
MICROFILM - A 44





MICROFILM - A44 -

2 0 1



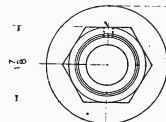
MICROFILM - A 44 -



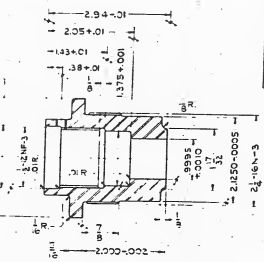
HEAT TREATMENT AND FINAL FINISH

$\frac{1}{4}$ -20 NC-3, AT ASSEMBLY

1.5625+0.0010



STAMP PIECEMARK



NUT
STEEL WDX1315
AS ROLLED

(B) 156627

ALL DIMENSIONS
UNLESS SPECIFIED
ARE IN INCHES
FRACTIONS
AND DECIMALS

SCALE $\frac{1}{1}$

B156627

PHYSICAL
PROPERTIES

JUNE 30, 1939
REVISIONS

T 4-12-40

DWG PERTAINS TO

D340341
D39449

SYMBOL

APPROVED FOR RELEASE BY THE CENTER OF ORDNANCE

W.T.N. 156627

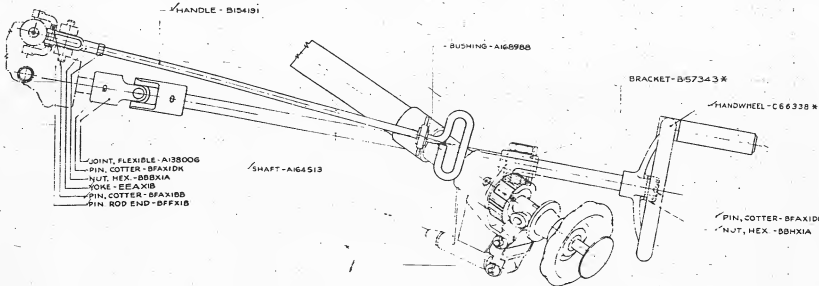
SUBMITTED

APPROVED BY LABEL OF THE CENTER OF ORDNANCE

ORDNANCE DEPT. U.S.A.

MADE AT ROCK ISLAND ARSENAL

MICROFILM - A 44



CONTROLS

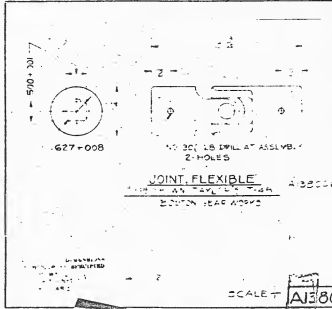
* FINDING DIAGRAM

DATE	REVISED	BY	REASON
JUNE 30, 1953	1		
REVISIONS		SYMBOL	
REVISED	BY	REASON	
DWG PERTAINING TO	REVISED	BY	REASON
REVISED			
IDENTIFIED			
ESTIMATED			
DATE		BY	
APPROVED		DATE	
D34141		ORDNANCE DEPT., U.S.A.	

NOT TO BE USED IN PLACE OF ORIGINAL DRAWING. THIS DRAWING IS FOR INFORMATION ONLY AND IS NOT TO BE USED AS A BASIS FOR CONSTRUCTION.

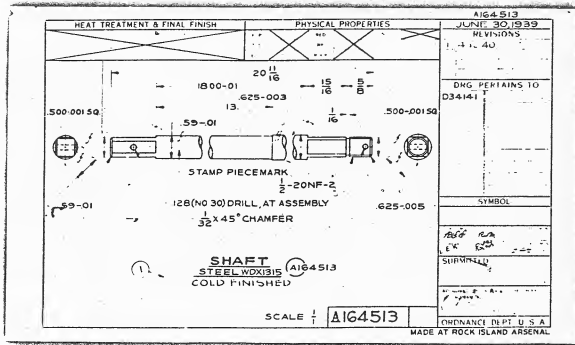
0 1 2 3 4 5 6 7 8 9 10 INCHES

MICROFILM - A44 - 306

570-2017		A 100006	
		PHYSICAL PROPERTIES T.P. 1 T.S. 2 EL. 3 M.D. HT. 1 BR. 1 SC. 1 C.C. 1 T.P. 1	DEC 30, 1932 REVISIONS 1 2 3 4 5 6 7 8 9 10 11 12 13 14 15 16 17 18 19 20 21 22 23 24 25 26 27 28 29 30 31 32 33 34 35 36 37 38 39 40 41 42 43 44 45 46 47 48 49 50
.627-008		NO. 300 LB SWILL AT ASSEMBLY 2 HOLES	
		JOINT FLEXIBLE	
		A 100006	
		MAY 1933	
		SYMBOL	
		XZJ 22	
		SUBMITTED	
		APPROVED	
		ORD. OFFICE, WAR DEPT.	
		SCALE 1/4" = 1"	
		AJ 38006	

MICROFILM - A 44 -

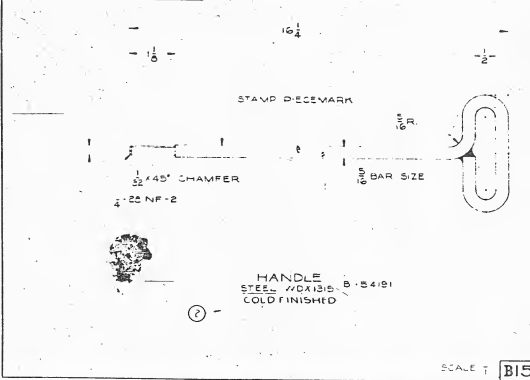
207



MICROFILM - A44 -



HEAT TREATMENT AND FINAL FINISH



PHYSICAL PROPERTIES		JUNE 30, 1959	
		REVISIONS	
Y P		1	12-14-59
Y B		2	4-12-60
EL S			
RED			
BA			
ROCK			
SCALE			

DRG. PERTAINS TO

B154191	

REVISIONS: NONE BY DRG. REVISIONS

DATE: *2-14-60* LAST REVISION

SUBMITTED:

APP. BY: *C. V. [Signature]*

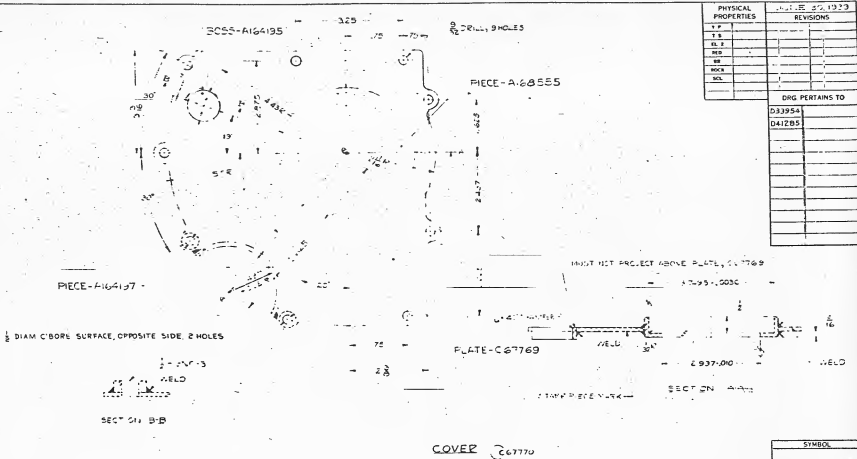
ORDNANCE DEPT. U. S. A.

SCALE 1 B154191

MADE AT ROCK ISLAND ARSENAL

MICROFILM - 444





DATE 06/19/53	
PHYSICAL PROPERTIES	REVISIONS
1. P.	
2. E.	
3. W.	
4. R.	
5. C.	

DRG PERTAINS TO	
D33954	
D41285	

SYMBOL	
	HEAT TREATED
	WELD
	SUBMITTED
	ORDER OF THE CHIEF OF ARMAMENTS

MICROFILM - A44 - 210

SCALE 1:667770

MADE AT ROCK ISLAND ARSENAL

PHYSICAL PROPERTIES	JUNE 30, 1973 REVISIONS
1	1. 4. 15. 50
2	
3	
4	
5	
6	
7	
8	
9	
10	
DWG PERTAINS TO	

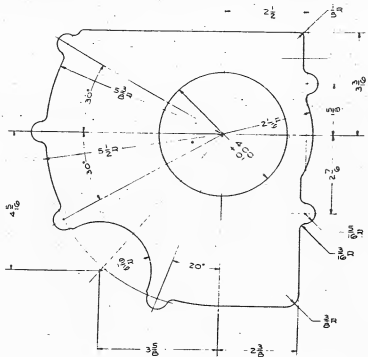


PLATE
PLAIN CARBON STEEL
1/8" THICK, HOT ROLLED, PICKLED

C67769

SYMBOL	
1	1/8" PL
2	1/8" PL
3	1/8" PL
4	1/8" PL
5	1/8" PL
6	1/8" PL
7	1/8" PL
8	1/8" PL
9	1/8" PL
10	1/8" PL
SUBMITTED:	
APPROVED BY: [Signature]	
DATE: [Date]	
ORDNANCE DEPT. U. S. A.	
MADE AT ROCK ISLAND ARSENAL	

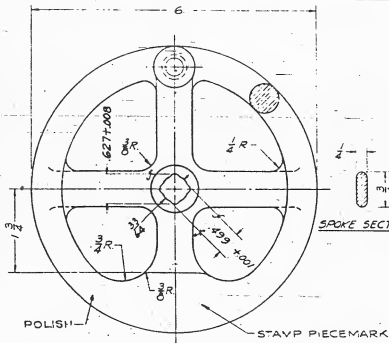
SCALE: C67769

MICROFILM - A 44 -

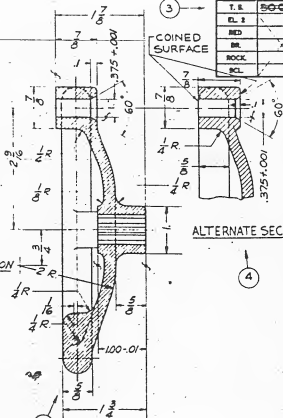
HEAT TREATMENT AND FINAL FINISH

~~HEAT TREATMENT~~

3



SPOKE SECTION



ALTERNATE SECTION

PHYSICAL PROPERTIES

T.P.	
T.E.	50-000
CL. I	3
RED	46
BR.	
ROCK	
SCL.	

JUNE 30, 1939

REVISIONS

1	8-28-39
2	4-12-40
3	8-4-41
4	6-17-42

DRG. PERTAINS TO

C 66330

SYMBOL

ENGINEER	TRACER	LVG DRUGHTMAN
H.R.M.		P.A.
DESIGNED		CHIEF DRUGHTMAN
J.S.W.		

SUBMITTED:

ORD. DEPT. U.S.A.

APPROVED BY CHIEF OF THE BUREAU OF ORDNANCE

ORD. DEPT. U.S.A.

ORDNANCE DEPT. U.S.A.

MADE AT ROCK ISLAND ARSENAL

HANDWHEEL (B153909)
~~STAINLESS ALLOY OR TUNGSTEN CLASS II~~
 MALLEABLE IRON CASTING, TYPE A

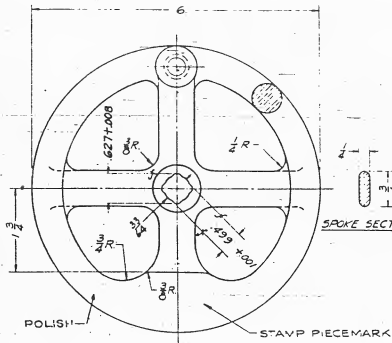
SCALE 4

B153909

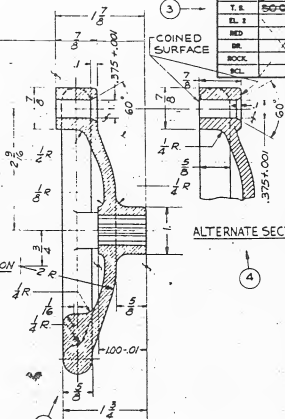
HEAT TREATMENT AND FINAL FINISH

~~HEAT TREATMENT~~

3



SPOKE SECTION



ALTERNATE SECTION

PHYSICAL PROPERTIES

T. P.	1	8-28-32
T. E.	2	4-12-40
EL. I	3	8-4-41
RED.	4	6-17-42
SM.		
MOQ.		
INCL.		

JUNE 30, 1939

REVISIONS

1	8-28-32
2	4-12-40
3	8-4-41
4	6-17-42

DRG. PERTAINS TO

CGG339

SYMBOL

DESIGNED	TRACED	LYN. ENGINEER
H.R.M.		P.A.
CHECKED		DRY. ENGINEER
R.E.H.		

SUBMITTED:

U.S. DEPT. OF A.

APPROVED BY OFFICE OF THE CHIEF OF ORDNANCE

R. E. H.

ORDNANCE DEPT. U.S.A.

MADE AT ROCK ISLAND ARSENAL

HANDWHEEL (B153909)
~~ALUMINUM ALLOY OF THIS CLASS~~
 MALLEABLE IRON CASTING, TYPE A

SCALE 4

B153909

NUT, JAM - BBDX2A
CONNECTION - A157024

LOOP - A157023
HOOK - A18962
PIN - A15959

PN - A169780
LT VER - B05667 A

CAM - A172830
SPRING, HELICAL - A172835

LOOP, PL - CLFX2A
DUCLE - A 7277c

PIN, HEADLESS - DFEXCF
PIV. COTTER - BFXACD
BRACKET - C72473
BRACKET - B9382T
PIECE - A168736

SCREW, CA. FL. H. - COKVA
STAKE AT ASSEMBLY
LATCH - AIC7738
BRACKET - C791
BRACKET - B 3863C 718

STAKE BOTH
ENDS OF PIN

2-20HC-2
HOLES

SECTION A-A
SCALE 1

WASHER - A172020
PIV. STRAIGHT - BFDXEN
SCREW, SET - BCTXIAD
PLUNGER - A172777

NUT, CAST - E - BBFX2E
PIV. COTTER - BFXADT
WASHER - A173519
BUSHING - A173520

BRACKET - C91846 A
BRACKET - 71620
LUNETTE - C69354

LOCK, TRAIL AND LUNETTE

NOTE (STAIN GUN CAB)
1.04 DUCTILE IRON OF TRAIL
SEE C5947T / C5947B
NOTE (PRODUCTION)
FOR OTHER VIEWS OF TRAILS
SEE C41820 & C41830

A 171125 D 288AV

REV. NO.		DATE	BY	CHKD.	APP'D.
1	1	10-1-53
2	1	10-1-53
3	1	10-1-53
4	1	10-1-53
5	1	10-1-53
6	1	10-1-53
7	1	10-1-53
8	1	10-1-53
9	1	10-1-53
10	1	10-1-53
11	1	10-1-53
12	1	10-1-53
13	1	10-1-53
14	1	10-1-53
15	1	10-1-53
16	1	10-1-53
17	1	10-1-53
18	1	10-1-53
19	1	10-1-53
20	1	10-1-53
21	1	10-1-53
22	1	10-1-53
23	1	10-1-53
24	1	10-1-53
25	1	10-1-53
26	1	10-1-53
27	1	10-1-53
28	1	10-1-53
29	1	10-1-53
30	1	10-1-53
31	1	10-1-53
32	1	10-1-53
33	1	10-1-53
34	1	10-1-53
35	1	10-1-53
36	1	10-1-53
37	1	10-1-53
38	1	10-1-53
39	1	10-1-53
40	1	10-1-53
41	1	10-1-53
42	1	10-1-53
43	1	10-1-53
44	1	10-1-53
45	1	10-1-53
46	1	10-1-53
47	1	10-1-53
48	1	10-1-53
49	1	10-1-53
50	1	10-1-53
51	1	10-1-53
52	1	10-1-53
53	1	10-1-53
54	1	10-1-53
55	1	10-1-53
56	1	10-1-53
57	1	10-1-53
58	1	10-1-53
59	1	10-1-53
60	1	10-1-53
61	1	10-1-53
62	1	10-1-53
63	1	10-1-53
64	1	10-1-53
65	1	10-1-53
66	1	10-1-53
67	1	10-1-53
68	1	10-1-53
69	1	10-1-53
70	1	10-1-53
71	1	10-1-53
72	1	10-1-53
73	1	10-1-53
74	1	10-1-53
75	1	10-1-53
76	1	10-1-53
77	1	10-1-53
78	1	10-1-53
79	1	10-1-53
80	1	10-1-53
81	1	10-1-53
82	1	10-1-53
83	1	10-1-53
84	1	10-1-53
85	1	10-1-53
86	1	10-1-53
87	1	10-1-53
88	1	10-1-53
89	1	10-1-53
90	1	10-1-53
91	1	10-1-53
92	1	10-1-53
93	1	10-1-53
94	1	10-1-53
95	1	10-1-53
96	1	10-1-53
97	1	10-1-53
98	1	10-1-53
99	1	10-1-53
100	1	10-1-53

B PERTAINS TO ALTERNATIVE OF DRG C5947T
D PERTAINS TO ALTERNATIVE OF DRG C59473
A PERTAINS TO ALTERNATIVE OF DRG C72920

0 1 2 3 4 5 6 7 8 9 10 11 INCHES

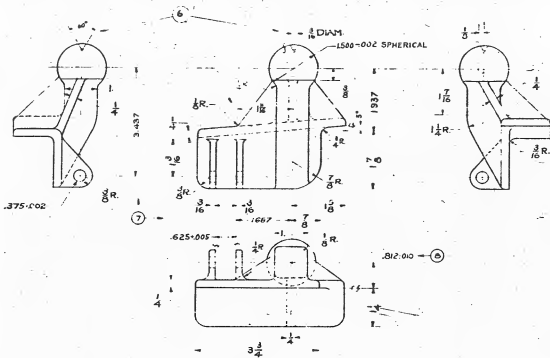
D33989

MICROFILM - A 44 - 400

PHYSICAL PROPERTIES		MARCH 1, 1934	
		REVISIONS	
TEMP.		3	10-9-36
TENS.		4	2-10-37
EL. RES.		5	6-1-38
IMP.		6	7-20-39
W. RES.		7	4-2-41
IMP. RES.		8	5-22-41
IMP. RES.			
IMP. RES.			

DRG PERTAINS TO

C59508
 07215
 D3H24
 23322
 03399
 054027



BRACKET
 STEEL CASTING, CLASS NO. 2 C59473-6

005
 006
 007
 008
 009
 010

SCALE $\frac{1}{2}$ C59473

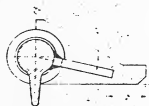
SYMBOL	
Pt B	241
FOR USE	PCB
V.G.S. D.C.M.	100
QUANTITY	
DATE	
APPROVED BY	
DESIGNED BY	
MANUFACTURED BY	

MICROFILM - A 44 -



SECTION B-B

SECTION C-C



SECTION A-A

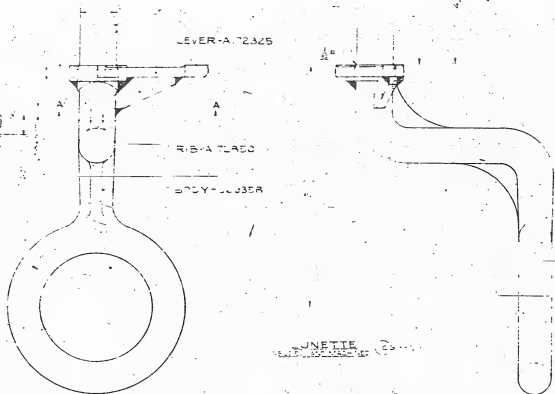
STAVI RESEVANA



LEVER-A.73325

RIB-A.11450

BODY-A.10358



UNETTE
SARAJEVO

UNITATE DE PROIECTARE
DE INSTRUMENTE
DE MĂSURĂ
DE PRECIZIE
BUCUREȘTI

Scale: 0 1 2 3 4 5 6 7 8 9 10 mm

069359

MADE IN YUGOSLAVIA

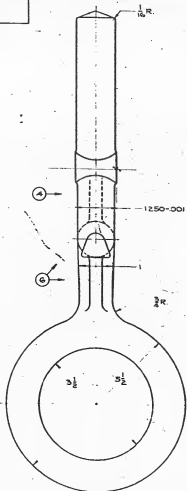
13-0-0-0
4-6-20-41
5-2-0-41
6-5-0-41

337*

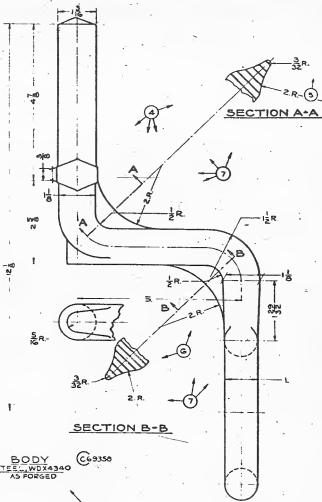
TABLE WITH 4 columns and 3 rows, containing technical specifications and dates.

MICROFILM - A 44 - 1 0 5

HEAT TREATMENT & FINAL FINISH
HEAT TREAT BEFORE
MACHINING



PLACEMENT OF DIMENSIONS
FOR FORGING OR SWELDER
DIP-1143-C
PART TWO: I
AUG 41

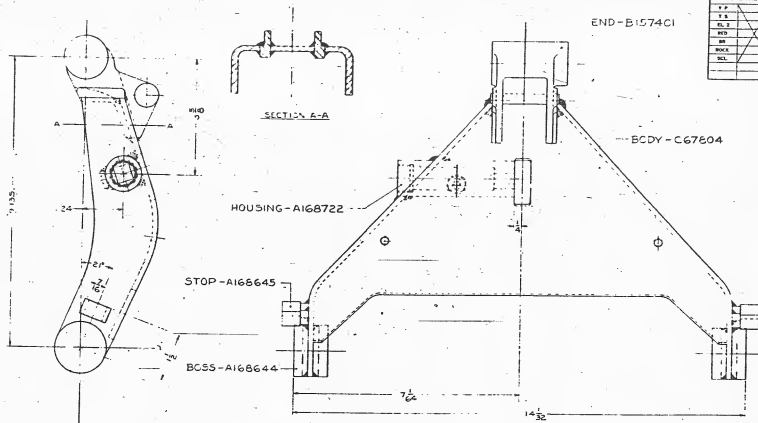


BODY
STEEL - INDIAN 330
AS FORGED

C69350

PHYSICAL PROPERTIES		REVISIONS	
T.T.		2	11-28-33
H.T.		3	5-4-32-30
H.F.		4	5-20-41
M.F.		5	5-16-41
M.		6	5-12-40-41
MO.	C 30-33	7	5-28-41
SL			
DRG PERTAINS TO C69350			

SYMBOL	
	HEAT TREAT
	STEEL
	FORGED
	WELDED
	INSPECTED
	APPROVED
	DESIGNED
	DRAWN
	CHECKED
	FINISH
	SCALE
	MATERIAL
	PROCESS
	INSPECTED
	APPROVED
	DESIGNED
	DRAWN
	CHECKED
	FINISH
	SCALE
	MATERIAL
	PROCESS
	INSPECTED
	APPROVED
	DESIGNED
	DRAWN
	CHECKED
	FINISH
	SCALE
	MATERIAL
	PROCESS
	INSPECTED
	APPROVED
	DESIGNED
	DRAWN
	CHECKED
	FINISH
	SCALE
	MATERIAL
	PROCESS
	INSPECTED
	APPROVED
	DESIGNED
	DRAWN
	CHECKED
	FINISH
	SCALE
	MATERIAL
	PROCESS
	INSPECTED
	APPROVED
	DESIGNED
	DRAWN
	CHECKED
	FINISH
	SCALE
	MATERIAL
	PROCESS
	INSPECTED
	APPROVED
	DESIGNED
	DRAWN
	CHECKED
	FINISH
	SCALE
	MATERIAL
	PROCESS
	INSPECTED
	APPROVED
	DESIGNED
	DRAWN
	CHECKED
	FINISH
	SCALE
	MATERIAL
	PROCESS
	INSPECTED
	APPROVED
	DESIGNED
	DRAWN
	CHECKED
	FINISH
	SCALE
	MATERIAL
	PROCESS
	INSPECTED
	APPROVED
	DESIGNED
	DRAWN
	CHECKED
	FINISH
	SCALE
	MATERIAL
	PROCESS
	INSPECTED
	APPROVED
	DESIGNED
	DRAWN
	CHECKED
	FINISH
	SCALE
	MATERIAL
	PROCESS
	INSPECTED
	APPROVED
	DESIGNED
	DRAWN
	CHECKED
	FINISH
	SCALE
	MATERIAL
	PROCESS
	INSPECTED
	APPROVED
	DESIGNED
	DRAWN
	CHECKED
	FINISH
	SCALE
	MATERIAL
	PROCESS
	INSPECTED
	APPROVED
	DESIGNED
	DRAWN
	CHECKED
	FINISH
	SCALE
	MATERIAL
	PROCESS
	INSPECTED
	APPROVED
	DESIGNED
	DRAWN
	CHECKED
	FINISH
	SCALE
	MATERIAL
	PROCESS
	INSPECTED
	APPROVED
	DESIGNED
	DRAWN
	CHECKED
	FINISH
	SCALE
	MATERIAL
	PROCESS
	INSPECTED
	APPROVED
	DESIGNED
	DRAWN
	CHECKED
	FINISH
	SCALE
	MATERIAL
	PROCESS
	INSPECTED
	APPROVED
	DESIGNED
	DRAWN
	CHECKED
	FINISH
	SCALE
	MATERIAL
	PROCESS
	INSPECTED
	APPROVED
	DESIGNED
	DRAWN
	CHECKED
	FINISH
	SCALE
	MATERIAL
	PROCESS
	INSPECTED
	APPROVED
	DESIGNED
	DRAWN
	CHECKED
	FINISH
	SCALE
	MATERIAL
	PROCESS
	INSPECTED
	APPROVED
	DESIGNED
	DRAWN
	CHECKED
	FINISH
	SCALE
	MATERIAL
	PROCESS
	INSPECTED
	APPROVED
	DESIGNED
	DRAWN
	CHECKED
	FINISH
	SCALE
	MATERIAL
	PROCESS
	INSPECTED
	APPROVED
	DESIGNED
	DRAWN
	CHECKED
	FINISH
	SCALE
	MATERIAL
	PROCESS
	INSPECTED
	APPROVED
	DESIGNED
	DRAWN
	CHECKED
	FINISH
	SCALE
	MATERIAL
	PROCESS
	INSPECTED
	APPROVED
	DESIGNED
	DRAWN
	CHECKED
	FINISH
	SCALE
	MATERIAL
	PROCESS
	INSPECTED
	APPROVED
	DESIGNED
	DRAWN
	CHECKED
	FINISH
	SCALE
	MATERIAL
	PROCESS
	INSPECTED
	APPROVED
	DESIGNED
	DRAWN
	CHECKED
	FINISH
	SCALE
	MATERIAL
	PROCESS
	INSPECTED
	APPROVED
	DESIGNED
	DRAWN
	CHECKED
	FINISH
	SCALE
	MATERIAL
	PROCESS
	INSPECTED
	APPROVED
	DESIGNED
	DRAWN
	CHECKED
	FINISH
	SCALE
	MATERIAL
	PROCESS
	INSPECTED
	APPROVED
	DESIGNED
	DRAWN
	CHECKED
	FINISH
	SCALE
	MATERIAL
	PROCESS
	INSPECTED
	APPROVED
	DESIGNED
	DRAWN
	CHECKED
	FINISH
	SCALE
	MATERIAL
	PROCESS
	INSPECTED
	APPROVED
	DESIGNED
	DRAWN
	CHECKED
	FINISH
	SCALE
	MATERIAL
	PROCESS
	INSPECTED
	APPROVED
	DESIGNED
	DRAWN
	CHECKED
	FINISH
	SCALE
	MATERIAL
	PROCESS
	INSPECTED
	APPROVED
	DESIGNED
	DRAWN
	CHECKED
	FINISH
	SCALE
	MATERIAL
	PROCESS
	INSPECTED
	APPROVED
	DESIGNED
	DRAWN
	CHECKED
	FINISH
	SCALE
	MATERIAL
	PROCESS
	INSPECTED
	APPROVED
	DESIGNED
	DRAWN
	CHECKED
	FINISH
	SCALE
	MATERIAL
	PROCESS
	INSPECTED
	APPROVED
	DESIGNED
	DRAWN
	CHECKED
	FINISH
	SCALE
	MATERIAL
	PROCESS
	INSPECTED
	APPROVED
	DESIGNED
	DRAWN
	CHECKED
	FINISH
	SCALE
	MATERIAL
	PROCESS
	INSPECTED
	APPROVED
	DESIGNED
	DRAWN
	CHECKED
	FINISH
	SCALE
	MATERIAL
	PROCESS
	INSPECTED
	APPROVED
	DESIGNED
	DRAWN
	CHECKED
	FINISH
	SCALE
	MATERIAL
	PROCESS
	INSPECTED
	APPROVED
	DESIGNED
	DRAWN
	CHECKED
	FINISH
	SCALE
	MATERIAL
	PROCESS
	INSPECTED
	APPROVED
	DESIGNED
	DRAWN
	CHECKED
	FINISH
	SCALE
	MATERIAL
	PROCESS
	INSPECTED
	APPROVED
	DESIGNED
	DRAWN
	CHECKED
	FINISH
	SCALE
	MATERIAL
	PROCESS
	INSPECTED
	APPROVED
	DESIGNED
	DRAWN
	CHECKED
	FINISH
	SCALE
	MATERIAL
	PROCESS
	INSPECTED
	APPROVED
	DESIGNED
	DRAWN
	CHECKED
	FINISH
	SCALE
	MATERIAL
	PROCESS
	INSPECTED
	APPROVED
	DESIGNED
	DRAWN
	CHECKED
	FINISH
	SCALE



PHYSICAL PROPERTIES		JUNE 30, 1939 REVISIONS	
1.1			
1.2			
1.3			
1.4			
1.5			
1.6			
1.7			
1.8			
1.9			
1.10			
DRG PERTAINS TO			
C67804			
C91530			

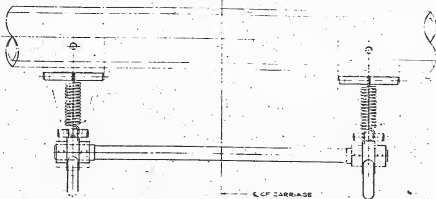
LOCK TRAVELING
WELDED



MACHINED LOCK: C67806
067805

SYMBOL	
AWR	DESIGNED BY
AWR	CHECKED BY
AWR	APPROVED BY
AWR	SUBMITTED
APPROVED ON BEHALF OF THE CHIEF OF BUREAU:	
AWR	DATE
AWR	DATE
ORDNANCE DEPT., U. S. A.	
MADE AT ROCK ISLAND ARSENAL	

AWR
DESIGNED BY
AWR
CHECKED BY
AWR
APPROVED BY
AWR
SUBMITTED

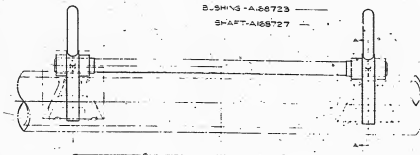


C OF CARRIAGE

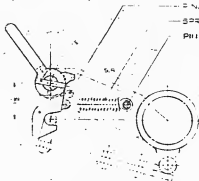
HOOK-A188724

B-SHIMS-A-88723

SHAFT-A188727



MECHANISM SPRING LOCKING



SPR. TAPER-SPOKED

S. N. STRAIGHT-HD&B

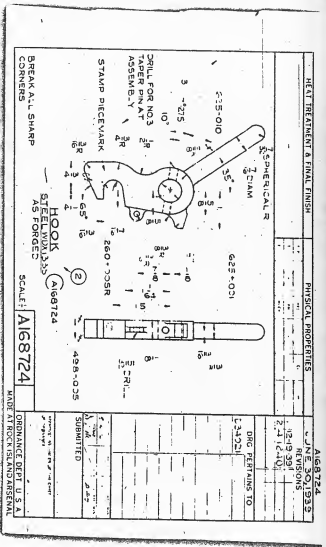
SPRING-A188728

PHI-A188726

SECTION AA

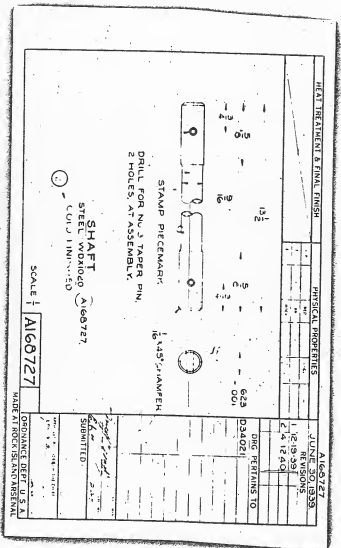
JULY 30, 1932		DATE	ISSUED	BY
REVISED				
1	2	3	4	5
F. B. C.		STOCK		
SING PLANS TO		ISSUED	DATE	BY
1788-1		1788-1	2/24	2/24
SUBMITTED				
CLEANED				
MADE AT ROCK ISLAND				
D34021		ISSUED BY		
MADE AT ROCK ISLAND				

MICROFILM - A44 - 4.30



MICROFILM - A44 -

213



ORDNANCE DEPT. U.S.A.
MADE AT ROCK ISLAND Arsenal

SCREW, CAP - EX HD - BC8Y3CB
 W/RE LOCKING - BFWX1A
 PIN, STRAIGHT - BFDX5H

BRACKET - B1840B
 BUSHING - A164356
 CASE, GEAR - C67814
 SCREW, CAP - EX HD - BC8Y1BC
 WASHER, LOCK, SHAKEPROOF - BEAKK

BUSH - NS - A164518
 CAP - A 64390
 WASHER - A 64396

WASHER - A 69678
 GEAR, BEVEL - A168655
 SCREW, ELEATING - B 56639
 THIMBLE - A168665

BEARINGS, THRUST - A168654

PIN, STRAIGHT - BFDX2AC
 CASE, GEAR - C67813
 BUSHING - A168719
 FITTING - A 68522

SCREW, SET - BCTX2R
 CUP - A168652
 PIN, STRAIGHT - BFDX1BC

GEAR, SHAFT - B 56624
 BUSH - NS - A168719
 RETAINER, C - A164395
 NUT - A 64191
 PIN, COTTER - BFAK1BE
 GEAR, BEVEL - A168654

FITTING - A 68522

SCREW, SET - BCTX BD

CONTROL, ELEATING AND FINS - C34284*

MICROFILM, ELEATING

0 1 2 3 4 5 6 7 8 9 10 INCHES

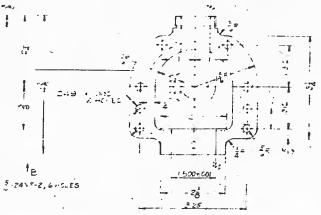
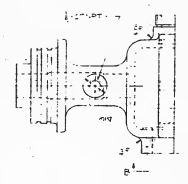
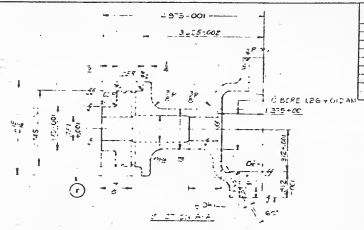
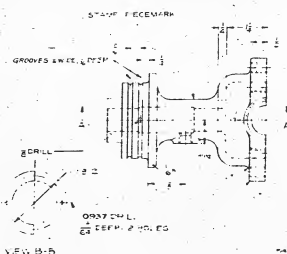
8 FINDING DIAGRAM

JUNE 27 1956			
REVISED	DATE	BY	REASON
1	11 3 56		
2	5 2 56		SYMBOL
3			
4			
5			
6			
7			
8			
9			
10			
11			
12			
13			
14			
15			
16			
17			
18			
19			
20			
21			
22			
23			
24			
25			
26			
27			
28			
29			
30			
31			
32			
33			
34			
35			
36			
37			
38			
39			
40			
41			
42			
43			
44			
45			
46			
47			
48			
49			
50			
51			
52			
53			
54			
55			
56			
57			
58			
59			
60			
61			
62			
63			
64			
65			
66			
67			
68			
69			
70			
71			
72			
73			
74			
75			
76			
77			
78			
79			
80			
81			
82			
83			
84			
85			
86			
87			
88			
89			
90			
91			
92			
93			
94			
95			
96			
97			
98			
99			
100			

134139

ORDNANCE DEPT, U. S. A.
 MADE AT ROCK ISLAND ARIZ

MICROFILM - A 44 - 436



MAJOR DIM
MINOR DIM
SECTION DIM

NOTE: VALUE A TYPING
SAFETY 267814

PHYSICAL PROPERTIES		REVISIONS	
7	1	1	2-1-43
18			
EL 2			
NO			
MR			
ROCK			
SL			

DRG PERTAINS TO

074 11
D39450

PARALLEL DIMS
THE OTHER DIMS
ARE TO BE
AS SHOWN
AND TYPING
AND LAB 2

CASE GEAR
STEEL CASTING, GRADE NO. 2

SCALE: 067813

SYMBOL	
1	1
2	2
3	3
4	4
5	5
6	6
7	7
8	8
9	9
10	10
11	11
12	12
13	13
14	14
15	15
16	16
17	17
18	18
19	19
20	20
21	21
22	22
23	23
24	24
25	25
26	26
27	27
28	28
29	29
30	30
31	31
32	32
33	33
34	34
35	35
36	36
37	37
38	38
39	39
40	40
41	41
42	42
43	43
44	44
45	45
46	46
47	47
48	48
49	49
50	50
51	51
52	52
53	53
54	54
55	55
56	56
57	57
58	58
59	59
60	60
61	61
62	62
63	63
64	64
65	65
66	66
67	67
68	68
69	69
70	70
71	71
72	72
73	73
74	74
75	75
76	76
77	77
78	78
79	79
80	80
81	81
82	82
83	83
84	84
85	85
86	86
87	87
88	88
89	89
90	90
91	91
92	92
93	93
94	94
95	95
96	96
97	97
98	98
99	99
100	100

APPROVED BY: [Signature]
OFFICE OF THE ENGINEER
OF DEFENSE

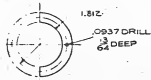
USE DEP. 1
ORDNANCE DEPT. U. S.
MADE AT ROCK ISLAND ARSE.

MICROFILM - A A A - 1 5 A

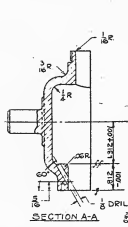
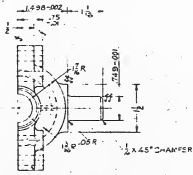
PHYSICAL PROPERTIES	JUNE 30, REVISIONS
TF	1 A:4 42
TS	
EL 3	
HD	
SR	
ROCK	
ML	

DRG PERTAIN

334.39
033450



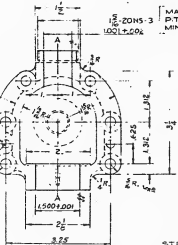
VIEW B-B



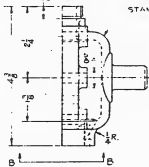
SECTION A-A

1.500 ± 0.005
2 HOLES

0.037 DRILL
6 HOLES



MAJOR DIAM 1.500 ± 0.001
PITCH DIAM 1.350 ± 0.001
MINOR DIAM 1.250 ± 0.001



STAMP ECEMARK

NOTE: MACHINE WITH MATING PART C67813

CASE GEAR
STEEL CASTING, GRADE NO. 2 C67814

ALL DIMENSIONS
ARE UNLESS OTHERWISE
SPECIFIED. SEE
PROVISIONS 2 & 8
APPLICABLE

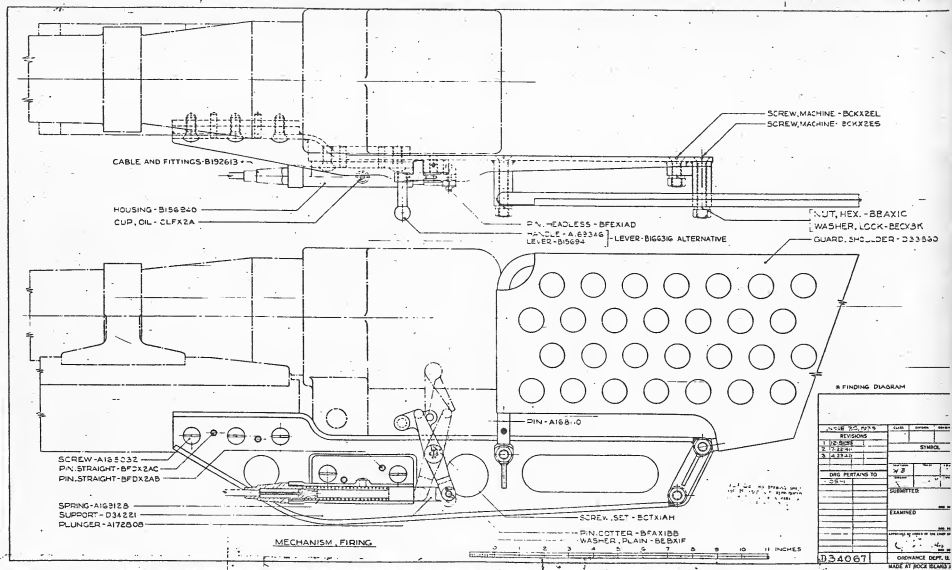
①

SCALE: C67814

SYMBOL	
QPA	INSPECTION
SUBMITTED	DATE
APPROVED BY	DATE
ORDNANCE DEPT. MADE AT ROCK ISLAND AFB	

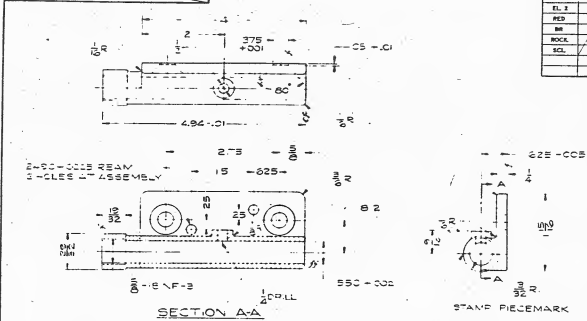
MICROFILM - Δ 44 -





MICROFILM - A44 - 157

HEAT TREATMENT AND FINAL FINISH



SECTION A-A

HOUSING
BRONZE CASTING, COIR. NO. 5 8156940

SCALE - 8156940

PHYSICAL PROPERTIES		JUNE 30, 1939	
		REVISIONS	
T.P.			
T.S.			
EL. 2			
RED			
MR			
ROCK.			
SCL			

DRG. PERTAINS TO

D34067
D153756
D41009

SYMBOL

DESIGNED	BY R. M. E.	CHIEF ENGINEER
CHECKED	E.	CHIEF ENGINEER

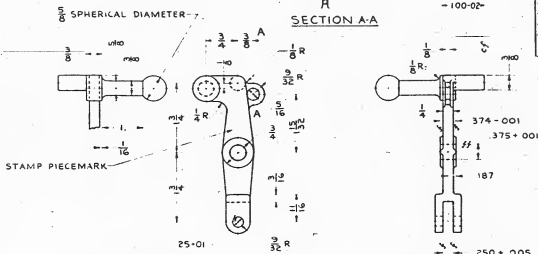
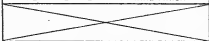
SUBMITTED:

APPROVED BY ORDER OF THE CHIEF OF ORDNANCE

ORDNANCE DEPT. U. S. A.
MADE AT ROCK ISLAND ARSENAL

MICROFILM - A 44 -

HEAT TREATMENT AND FINAL FINISH



LEVER

ALUMINUM BRONZE CASTING B166316 GRADE B
 ALTERNATE DESIGN MAY BE USED IN LIEU
 OF A1693-16 AND B166941

ALL FILLETS AND RADII TO BE $\frac{1}{16}$
 UNLESS OTHERWISE SPECIFIED.
 BREAK ALL SHARP CORNERS

PHYSICAL
 PROPERTIES

JANUARY 18, 1940
 REVISIONS

1	11-30-40
2	2-9-40
3	4-12-40
1	0.000
2	6% - 12%
3	
4	
5	
6	
7	
8	
9	
10	
11	
12	
13	
14	
15	
16	
17	
18	
19	
20	
21	
22	
23	
24	
25	
26	
27	
28	
29	
30	
31	
32	
33	
34	
35	
36	
37	
38	
39	
40	

DRG PERTAINS TO

D34067

EJM

SUBMITTED

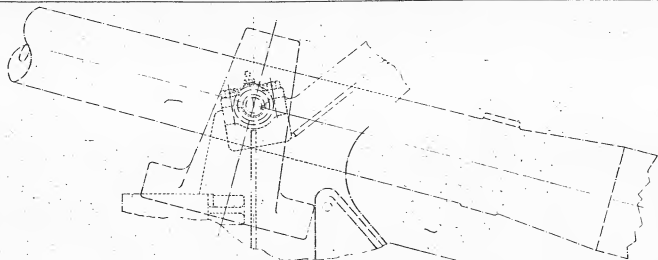
SCALE 1

B166316

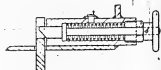
ORDNANCE DEPT. U. S. A.
 MADE AT ROCK ISLAND ARSENAL

MICROFILM - A44 -





KNOB-A168749
 PIN, STRAIGHT-BFDX1CM
 GUIDE-A168748
 SPRING, HELICAL-A168747
 CUP, OIL-CLFX2A
 PLUNGER-A168732



SECTION A-A

* FINDING DIAGRAM

PIN-A164029
 NUT-A164058
 PIN, COTTER-BFAX1CR
 BUSHING-A164762

LOOP-A168534

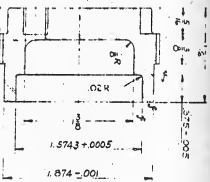
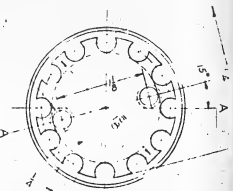
NUT, JAM-B8DXID
 CONNECTION-A168539
 PIN-A168642
 PIN, COTTER-BFAX1CD
 PIN, HEADLESS-BFEX1CF
 LEVER-A168957*
 LOCK, TRAVELING-C67806

MECHANISM, LOCK, TRAVELING

0 1 2 3 4 5 6 7 8 9 10 INCHES

DRAWING NO. 1538 REVISIONS Q-1-2		SYMBOL
ENG. PLATING TO F-150-1 F-150-1	1/2" x 1/2" x 1/2" 1/2" x 1/2" x 1/2" 1/2" x 1/2" x 1/2"	EXAMINED
733980	1/2" x 1/2" x 1/2" 1/2" x 1/2" x 1/2" 1/2" x 1/2" x 1/2"	MADE AT WPT FOR ASD 1952

MICROFILM - A44 - 167



5/8 DIA. 2.5\"/>

SECTION A-A
 STAYED ECEMARK

RETAILED
 COLD FINISHED

B154017

APPROVED BY CHECKER OF THE
 ORDNANCE DEPT.
 MADE AT ROT

NO.	REV.	DESCRIPTION

DRG. REMAINS	231649
	D24108
	D41294

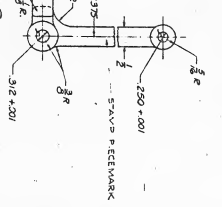
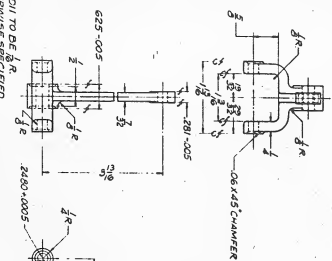
SYMBOL	DESCRIPTION

APPROVED BY CHECKER OF THE
 ORDNANCE DEPT.
 MADE AT ROT

MICROFILM - A44 -



HEAT TREATMENT AND FINAL FINISH



PHYSICAL PROPERTIES	JUNE 30, 1952
T.R.	1
M.S.	2
H.S.	3
W.S.	4
W.C.	5
W.D.	6
W.E.	7
W.F.	8
W.G.	9
W.H.	10
W.I.	11
W.J.	12
W.K.	13
W.L.	14
W.M.	15
W.N.	16
W.O.	17
W.P.	18
W.Q.	19
W.R.	20
W.S.	21
W.T.	22
W.U.	23
W.V.	24
W.W.	25
W.X.	26
W.Y.	27
W.Z.	28

DRG. PERTAIN	D23149
	D24108
	D41294

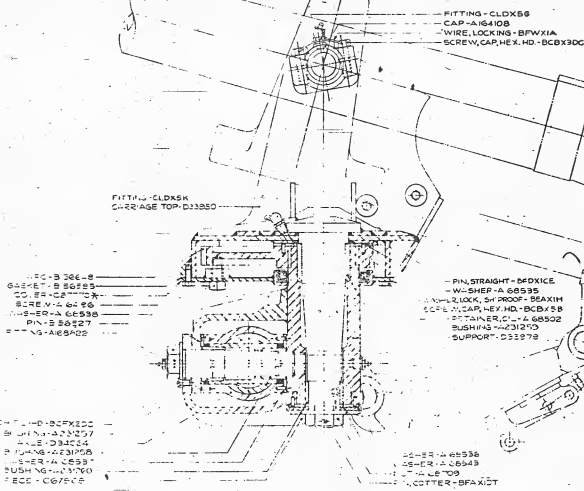
APPROVED BY CHECKER OF THE ORDNANCE DEPT. MADE AT ROT	DATE

BRONZE CASTING CO. NO.5
 OR WALLEABLE IRON CASTING, TYPE A

SCALE 1/4" = 1"
 B154046

APPROVED BY CHECKER OF THE
 ORDNANCE DEPT.
 MADE AT ROT

NOTE: ALL RADI TO BE 1/8"
 UNLESS OTHERWISE SPECIFIED.

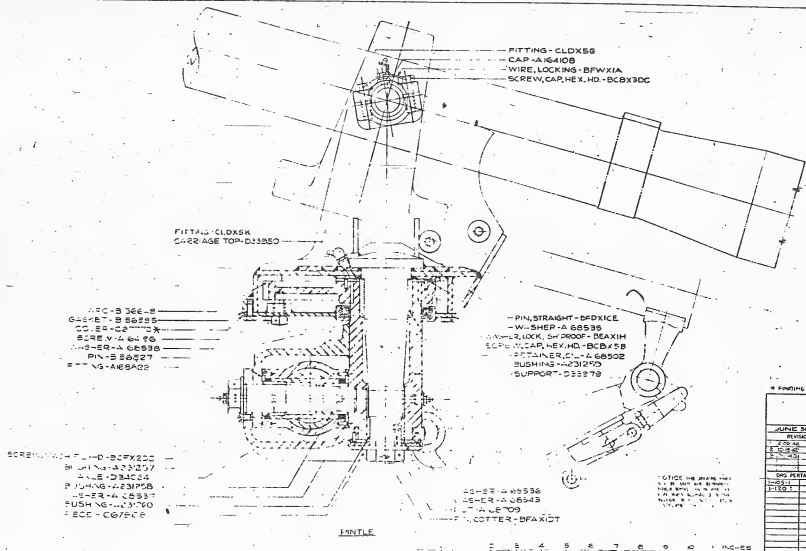


4 FINDING DIAGRAM

DATE	REVISED	BY
10/10/53	1	
10/10/53	2	
10/10/53	3	
10/10/53	4	
10/10/53	5	
10/10/53	6	
10/10/53	7	
10/10/53	8	
10/10/53	9	
10/10/53	10	
10/10/53	11	
10/10/53	12	
10/10/53	13	
10/10/53	14	
10/10/53	15	
10/10/53	16	
10/10/53	17	
10/10/53	18	
10/10/53	19	
10/10/53	20	
10/10/53	21	
10/10/53	22	
10/10/53	23	
10/10/53	24	
10/10/53	25	
10/10/53	26	
10/10/53	27	
10/10/53	28	
10/10/53	29	
10/10/53	30	
10/10/53	31	
10/10/53	32	
10/10/53	33	
10/10/53	34	
10/10/53	35	
10/10/53	36	
10/10/53	37	
10/10/53	38	
10/10/53	39	
10/10/53	40	
10/10/53	41	
10/10/53	42	
10/10/53	43	
10/10/53	44	
10/10/53	45	
10/10/53	46	
10/10/53	47	
10/10/53	48	
10/10/53	49	
10/10/53	50	
10/10/53	51	
10/10/53	52	
10/10/53	53	
10/10/53	54	
10/10/53	55	
10/10/53	56	
10/10/53	57	
10/10/53	58	
10/10/53	59	
10/10/53	60	
10/10/53	61	
10/10/53	62	
10/10/53	63	
10/10/53	64	
10/10/53	65	
10/10/53	66	
10/10/53	67	
10/10/53	68	
10/10/53	69	
10/10/53	70	
10/10/53	71	
10/10/53	72	
10/10/53	73	
10/10/53	74	
10/10/53	75	
10/10/53	76	
10/10/53	77	
10/10/53	78	
10/10/53	79	
10/10/53	80	
10/10/53	81	
10/10/53	82	
10/10/53	83	
10/10/53	84	
10/10/53	85	
10/10/53	86	
10/10/53	87	
10/10/53	88	
10/10/53	89	
10/10/53	90	
10/10/53	91	
10/10/53	92	
10/10/53	93	
10/10/53	94	
10/10/53	95	
10/10/53	96	
10/10/53	97	
10/10/53	98	
10/10/53	99	
10/10/53	100	

033954
 DRAWN BY
 CHECKED BY
 SCALE AS SHOWN

MICROFILM - A 44 - 504



FITTING - CLDX56
 CAP - A 64108
 WIRE, LOCKING - BFWX1A
 SCREW, CAP, HEX. HD. - BCX3DC

FITTING - CLDASK
 CARRIAGE TOP - D13850

W.C. - B 366-B
 GASKET - B 86225
 CO. SPR. - C 2110 X
 SCREW - A 64 26
 WAS. - ER - A 66538
 PIN - B 86527
 WAS. - A 66540

PIN, STRAIGHT - BFDXICE
 WASHER - A 66536
 SCREW, LOCK, SH. PROOF - BMAX1H
 SCREW, CAP, HEX. HD. - BCX35B
 FITTING, CL - A 66502
 BUSHING - A 661270
 SUPPORT - D52278

SCREW, WASH. - D - BCX3DC
 BUSHING - A 661270
 WAS. - D 34C 24
 P. JUNGLE - A 231205
 WAS. - ER - A 66537
 PUSHING - A 661270
 WAS. - C 67502

WAS. - ER - A 66536
 WAS. - ER - A 66543
 WAS. - A 661270
 WAS. - C 67502

NOTE: THE DRAWING IS
 A 1:1 SCALE OF THE
 ORIGINAL DRAWING
 MADE BY THE
 DESIGNER ON 11/15/54
 BY THE
 ENGINEER

LINTE

0 1 2 3 4 5 6 7 8 9 10 INCHES

PRINTING DIAGRAM

JUNE 30 1955		DATE	ISSUED	ISSUE
REVISED				
1	AS SHOWN			
2	AS SHOWN			
3	AS SHOWN			
4	AS SHOWN			
5	AS SHOWN			
6	AS SHOWN			
7	AS SHOWN			
8	AS SHOWN			
9	AS SHOWN			
10	AS SHOWN			
11	AS SHOWN			
12	AS SHOWN			
13	AS SHOWN			
14	AS SHOWN			
15	AS SHOWN			
16	AS SHOWN			
17	AS SHOWN			
18	AS SHOWN			
19	AS SHOWN			
20	AS SHOWN			
21	AS SHOWN			
22	AS SHOWN			
23	AS SHOWN			
24	AS SHOWN			
25	AS SHOWN			
26	AS SHOWN			
27	AS SHOWN			
28	AS SHOWN			
29	AS SHOWN			
30	AS SHOWN			
31	AS SHOWN			
32	AS SHOWN			
33	AS SHOWN			
34	AS SHOWN			
35	AS SHOWN			
36	AS SHOWN			
37	AS SHOWN			
38	AS SHOWN			
39	AS SHOWN			
40	AS SHOWN			
41	AS SHOWN			
42	AS SHOWN			
43	AS SHOWN			
44	AS SHOWN			
45	AS SHOWN			
46	AS SHOWN			
47	AS SHOWN			
48	AS SHOWN			
49	AS SHOWN			
50	AS SHOWN			
51	AS SHOWN			
52	AS SHOWN			
53	AS SHOWN			
54	AS SHOWN			
55	AS SHOWN			
56	AS SHOWN			
57	AS SHOWN			
58	AS SHOWN			
59	AS SHOWN			
60	AS SHOWN			
61	AS SHOWN			
62	AS SHOWN			
63	AS SHOWN			
64	AS SHOWN			
65	AS SHOWN			
66	AS SHOWN			
67	AS SHOWN			
68	AS SHOWN			
69	AS SHOWN			
70	AS SHOWN			
71	AS SHOWN			
72	AS SHOWN			
73	AS SHOWN			
74	AS SHOWN			
75	AS SHOWN			
76	AS SHOWN			
77	AS SHOWN			
78	AS SHOWN			
79	AS SHOWN			
80	AS SHOWN			
81	AS SHOWN			
82	AS SHOWN			
83	AS SHOWN			
84	AS SHOWN			
85	AS SHOWN			
86	AS SHOWN			
87	AS SHOWN			
88	AS SHOWN			
89	AS SHOWN			
90	AS SHOWN			
91	AS SHOWN			
92	AS SHOWN			
93	AS SHOWN			
94	AS SHOWN			
95	AS SHOWN			
96	AS SHOWN			
97	AS SHOWN			
98	AS SHOWN			
99	AS SHOWN			
100	AS SHOWN			

033954

ORDNANCE DIV
 MADE AT ROCK ISLAND

MICROFILM - A44 - 504

HEAT TREATMENT & FINAL FINISH

PHYSICAL PROPERTIES

TEMP	RED	SCL
T 5	BB	
EL 2	ROCK	

APPROVED

JUNE 30, 1949

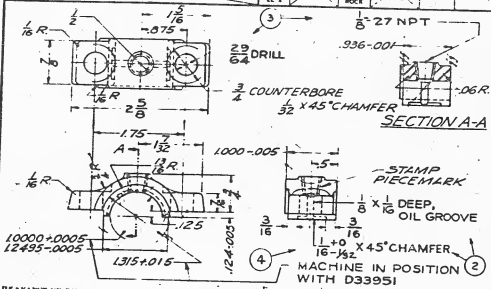
REVISIONS

1	4-12-40	
2	9-11-42	
3	10-19-42	
4	1-1-43	

DRG PERTAINS TO

D33143
D33954
D40724

SYMBOL



IF A DIMENSION IS NOT SPECIFIED
UNLESS OTHERWISE SPECIFIED:
FRACTIONAL:
ANGULAR:

CAP
STEEL WD 3115
A5 FORGED

A164108

SCALE

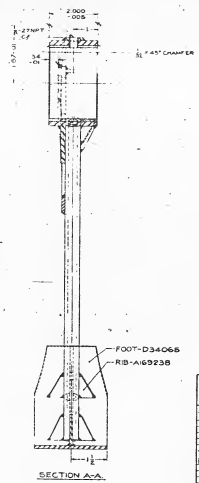
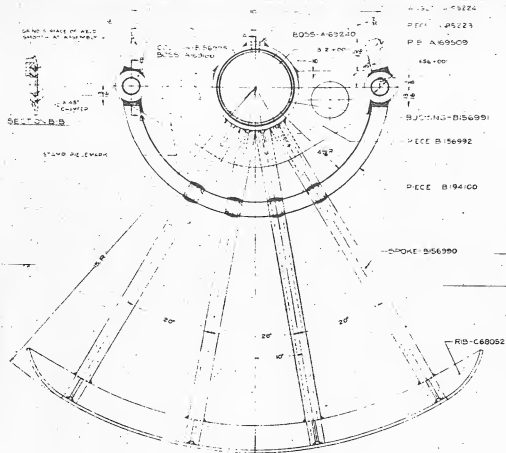
A164108

DESIGNED BY: U. J. H.
CHECKED BY: F. E. W.
SUBMITTED:

APPROVED BY ORDER OF THE CHIEF OF ORDNANCE:

ORDNANCE DEPT. U. S. A.

MADE AT ROCK ISLAND ARSENAL



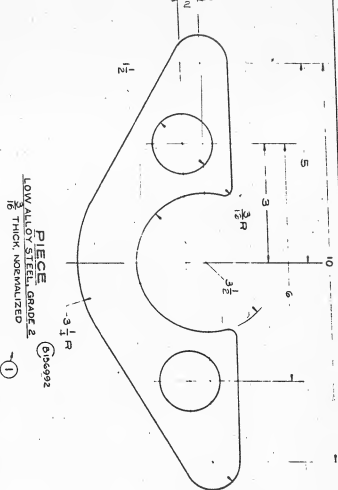
SEGMENT D34077

SECTION A-A

UNLESS SHOWN OTHERWISE	UNIT	SYMBOL	DEFINITION
ALL DIMENSIONS	INCHES		
REVISIONS			
438 2000			
1 11/15/52			
DATE		SYMBOL	
DESIGNED BY		DATE	
CHKD BY		DATE	
APPROVED BY		DATE	
EXAMINED BY		DATE	
D34077		DISHWASHED MADE IN U.S.A. MADE BY ROYCE-BRAND ENGINEERING	

MICROFILM - A44 - 52.3

HEAT TREATMENT AND FINAL FINISH



PIECE
LOW ALLOY STEEL, GRADE 2
1/8" THICK, NORMALIZED
①

①

SCALE 1/4" = 1"

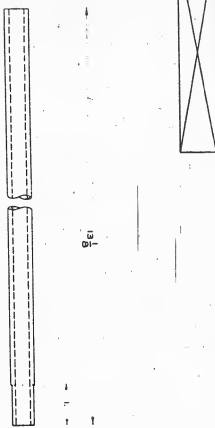
B1566992

ORDNANCE DEPT
MADE AT CON. 15
SUBMITTED
RECEIVED
DATE

MICROFILM - A44 -

53

HEAT TREATMENT AND FINAL FINISH



SPOKE
① B1566990
TUBING, SEAMLESS STEEL, W10220
.020 WALL THICKNESS



PHYSICAL PROPERTIES	JUN
1. TENSILE STRENGTH	5-116
2. YIELD POINT	32
3. ELONGATION	11.3
4. REDUCED SECTION ELONGATION	5.7
5. HARDNESS	126
6. TENSILE MODULUS	
7. TENSILE MODULUS OF RESILIENCE	
8. TENSILE MODULUS OF RESILIENCE	
9. TENSILE MODULUS OF RESILIENCE	
10. TENSILE MODULUS OF RESILIENCE	
11. TENSILE MODULUS OF RESILIENCE	
12. TENSILE MODULUS OF RESILIENCE	
13. TENSILE MODULUS OF RESILIENCE	
14. TENSILE MODULUS OF RESILIENCE	
15. TENSILE MODULUS OF RESILIENCE	
16. TENSILE MODULUS OF RESILIENCE	
17. TENSILE MODULUS OF RESILIENCE	
18. TENSILE MODULUS OF RESILIENCE	
19. TENSILE MODULUS OF RESILIENCE	
20. TENSILE MODULUS OF RESILIENCE	

D3407

DHG

SCALE 1/4" = 1"

B1566990

ORDN



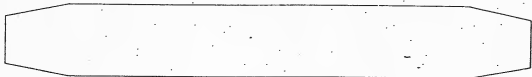
DEVELOPED LENGTH

FOOT \odot 3885
 LOW ALLOY STEEL GRADE 2
 THICK, NORMALIZED

①

FORM 30 (REV)	
REV	DATE
1	4 24 65
DESIGNER	
CHECKED	
APPROVED	
DATE	
SCALE	
34065	ORDNANCE DEPT U S A
MADE AT WOOD BRIDGE RESERVE	

MICROFILM - A 44 - 536



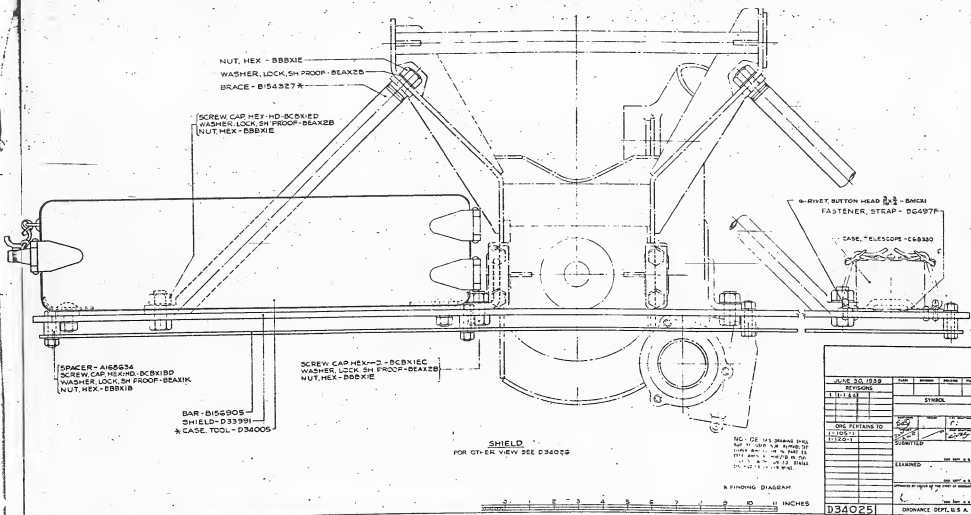
DEVELOPED LENGTH

FOOT ① 1005
LOW ALLOY STEEL GRADE 2
& THICK NORMALIZED

①

JUNE 20 1938	
REV. NO.	1
4240	SHED.
ENG. DESIGNED BY	W. E. B.
D34072	W. E. B.
SUBMITTED	W. E. B.
EXAMPLE	
SCALE	D34065
ORDNANCE DEPT. U. S. A.	
MADE AT ROCK ISLAND ARSENAL	

MICROFILM - A44 - 536



SHIELD
FOR OTHER VIEW SEE D34025

DC - DE 1/2 BORE (1/2)
 1/2" x 1/2" x 1/2" x 1/2" x 1/2"
 1/2" x 1/2" x 1/2" x 1/2" x 1/2"
 1/2" x 1/2" x 1/2" x 1/2" x 1/2"
 1/2" x 1/2" x 1/2" x 1/2" x 1/2"

6 FINDING DIAGRAM

JUNE 30, 1959		DATE	APPROVED	ISSUED	REV
1. TITLE		SHIELD			
2. REVISIONS					
3. DRG PERTAINING TO		<input type="checkbox"/> ORIGINAL <input type="checkbox"/> REVISION <input type="checkbox"/> MODIFICATION			
4. DRAWING		<input type="checkbox"/> IDENTIFIED <input type="checkbox"/> EXAMINED <input type="checkbox"/> APPROVED			
5. DRAWING		<input type="checkbox"/> APPROVED <input type="checkbox"/> APPROVED			
6. DRAWING		<input type="checkbox"/> APPROVED <input type="checkbox"/> APPROVED			
D34025		DISTANCE DEPT., U.S.A. MADE AT ROCK ISLAND MEDICAL			

MICROFILM - A44 - 538

HEAT TREATMENT AND FINAL FINISH

PHYSICAL PROPERTIES

JUNE 30, 1939

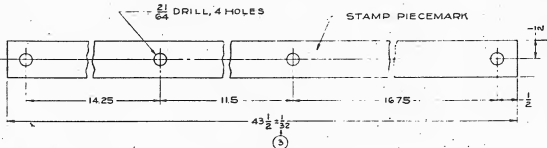
WT 1
 FT 2
 FT 3
 FT 7
 MD
 RA
 PHS
 SCA

REVISIONS
 1 4-13-40
 2 5-4-41
 3 5-13-42

DRG PERTAINS TO

D34025

SYMBOL



BAR
 ALUMINUM ALLOY (AL-CU-MG-MN) (B156905)
 1/8 THICK, CONDITION T
 PLAIN CARBON STEEL
 1/8 THICK

005 - 3
64

SCALE 1/2 B156905

SUBMITTED
 APPROVED BY: [Signature]
 IN PRESENCE
 ORDNANCE DEPT U. S. A.
 WASH. DC.

MICROFILM - A44 - 511

HEAT TREATMENT AND FINAL FINISH

PHYSICAL PROPERTIES	
F 2	
T 5	
H 2	
WD	
PH	
PH &	
W 1	

REVISIONS	
1	A-12-50
2	B-4-41
3	3-15-42

DRG PERTAINS TO

D34025

SYMBOL

DATE

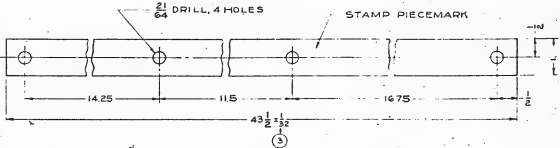
BY

SUBMITTED

APPROVED BY

DATE

ORDNANCE DEPT U. S. A.

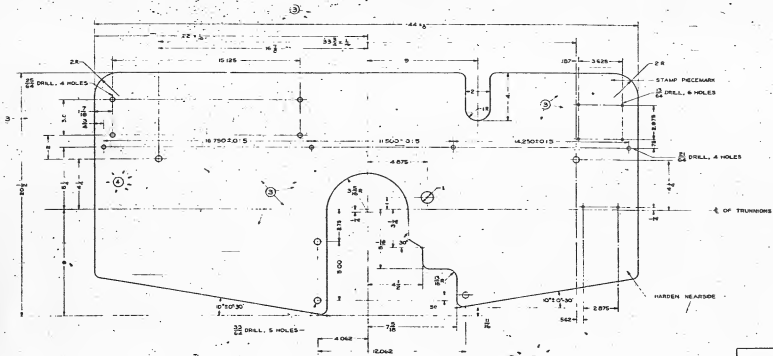


BAR
 ALUMINUM ALLOY (AL-CU-MG-MN) (B) 154 9 50
 1/8 THICK, CONDITION T
 PLAIN CARBON STEEL
 1/8 THICK

005 - 3
 24

SCALE 1/4" = 1" B156905

MICROFILM - A44 - 511

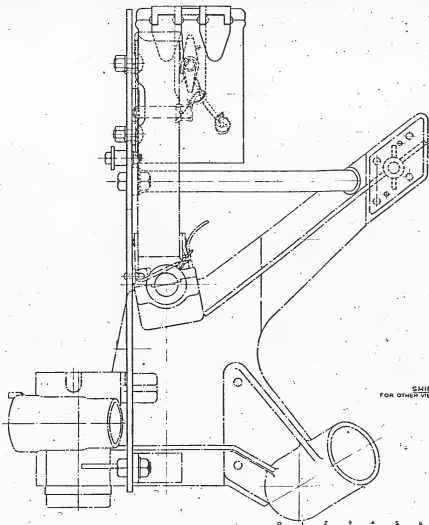


SHIELD
 1/2 INCH THICKNESS
 1/2 INCH RADIUS
 NOTE - ALL PARTS UNLESS OTHERWISE SPECIFIED

NOTE: TOLERANCES NOT CUMULATIVE
 FINISH: REMOVE ALL SHARP CORNERS
 TOLERANCE ON DRILLED HOLES TO BE +/-

JUNE 30, 1952		REVISED	ISSUED	BY
1-8-52				
1-11-52				
3-17-52				
4-18-52				
DESIGNED BY	DLM	CHKD BY	W.P.	
DRAWN BY	CEA	APP. BY	W.P.	
CHECKED BY		APPROVED BY		
TESTED BY		INSPECTED BY		
DATE TESTED		DATE INSPECTED		
SCALE: 1:1		ORDNANCE DEPT., U. S. A.		
13399		MADE AT ROCK ISLAND Arsenal		

MICROFILM - A44 - 542

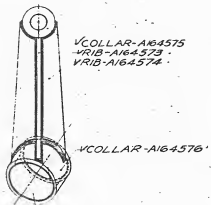
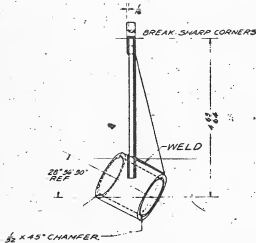
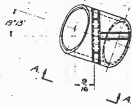


SHIELD
FOR OTHER VIEW SEE D34025

JUNE 30, 1939		REVISED	DATE	BY	REVISION	NO.
REVISED		SHIELD				
THIS PERTAINS TO		425	216	11	11	11
CLASS		3	1	1	1	1
IDENTIFIED						
EXAMINED						
DATE						
BY						
ORGANIZATION						
MADE AT ROCK ISLAND ARSENAL						

D34026

MICROFILM - A44 - 543

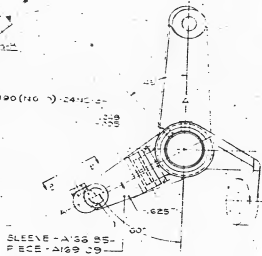
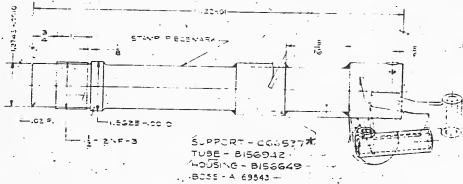
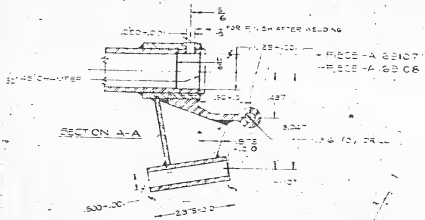


PHYSICAL PROPERTIES	JUNE 30, 1959	
	REVISIONS	
1. E		
1. S		
EL. S		
REV.		
APP.		
ROCK		
SQL		
DRG PERTAINS TO		
D3385		
D33932		
C68000		

SYMBOL	
REVISED	DATE
BY P.M.	BY P.M.
BY D.L.M.	BY D.L.M.
SUBMITTED	
REV. NO. 1.1.1.	
APPROVED BY THE CHIEF OF THE CDRG	
BY <i>[Signature]</i>	
ORDNANCE DEPT. U. S. A.	
MADE AT ROCK ISLAND ARSENAL	

SCALE C 66537

MICROFILM - A 44 - 552



SUPPORT C68000

PHYSICAL PROPERTIES		JUNE 25, 1959	
		REVISIONS	
Y.P.			
T.S.			
EL.			
HD.			
HR.			
ROCK.			
VEL.			

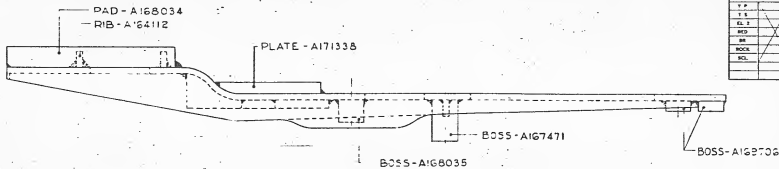
DRG PERTAINS TO
024054

SYMBOL	
	SEE DRAWING
	SEE DRAWING
	SEE DRAWING
SUBMITTED	
	SEE DRAWING
ORDNANCE DEPT U.S.A.	
MADE AT ROCK ISLAND ARSENAL	

* FINDING DIAGRAM

SCALE $\frac{1}{2}$ C68000

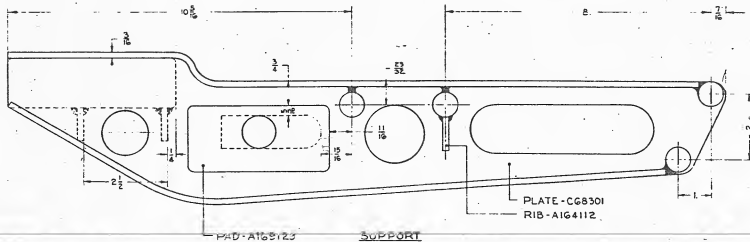
MICROFILM - A44 - 560



PHYSICAL PROPERTIES		JUNE 30, 1939	
		REVISIONS	
1. P.		1	12-2-39
1. S.		2	12-10-39
1. L.		3	12-2-41
1. M.			
1. R.			
1. C.			
1. D.			
1. E.			
1. F.			
1. G.			
1. H.			
1. I.			
1. J.			
1. K.			
1. L.			
1. M.			
1. N.			
1. O.			
1. P.			
1. Q.			
1. R.			
1. S.			
1. T.			
1. U.			
1. V.			
1. W.			
1. X.			
1. Y.			
1. Z.			

DRG PERTAINS TO

D34221



MACHINED D34221

SYMBOL

APPROVED	DATE	BY	FOR
	5-20	C. C.	DESIGN
	5-20	C. C.	CONSTRUCTION
SUBMITTED:			

APPROVED BY OFFICE OF ORDNANCE
BY: *[Signature]*
DATE: 5-20-39

ORDNANCE DEPT. U. S. A.

MADE AT ROCK ISLAND ARSENAL

SCALE OF DIMENSIONS
FOR LISTS AND DIMENSIONS
DECIMAL INCH
FRAC. INCH
ANGLES



MICROFILM - A 44 - 507

PHYSICAL PROPERTIES		REVISIONS	
TEMP		1	12-4-39
STRENGTH		2	12-13-39
ELONG		3	4-17-40
WEIGHT			
MOQ			
SOL			

DRG PERTAINS TO

C68301	

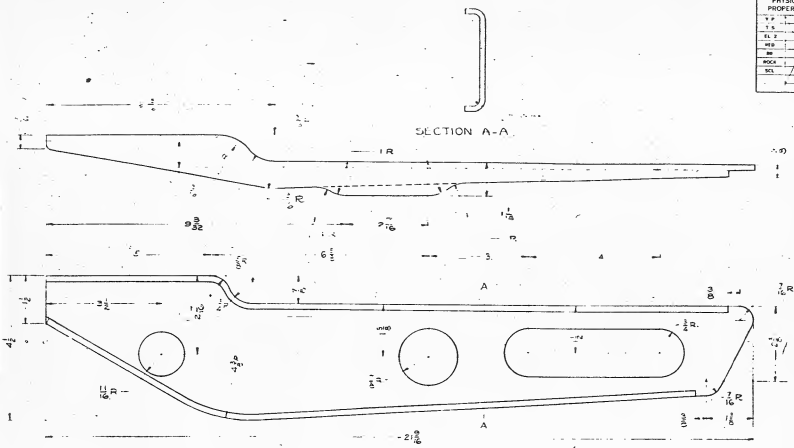
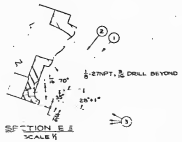
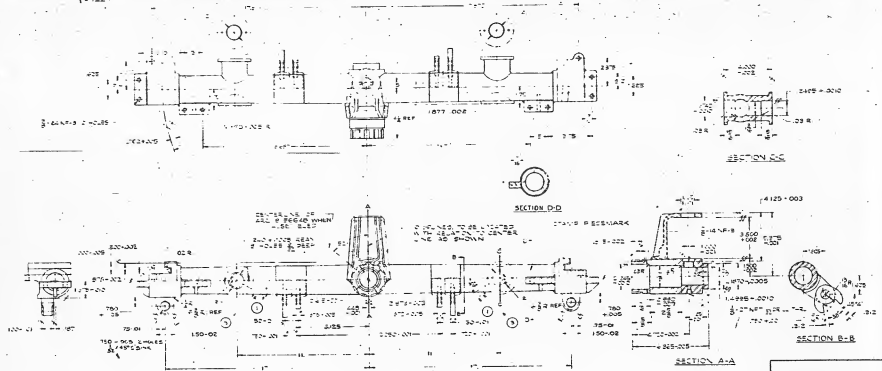


PLATE
 1/4" THICK, NORMALIZED
 C68301

SYMBOL	
SECTION	BY SA
DATE	12-4-39
BY	SA
CHKD	SA
APP'D	SA
SUBMITTED	
APPROVED BY UNDER THE SUPERVISION OF THE CHIEF OF DEPARTMENT	
DATE	

SCALE: C68301
 ORDNANCE DEPT. U.S.A.
 MADE AT ROCK ISLAND ARSENAL

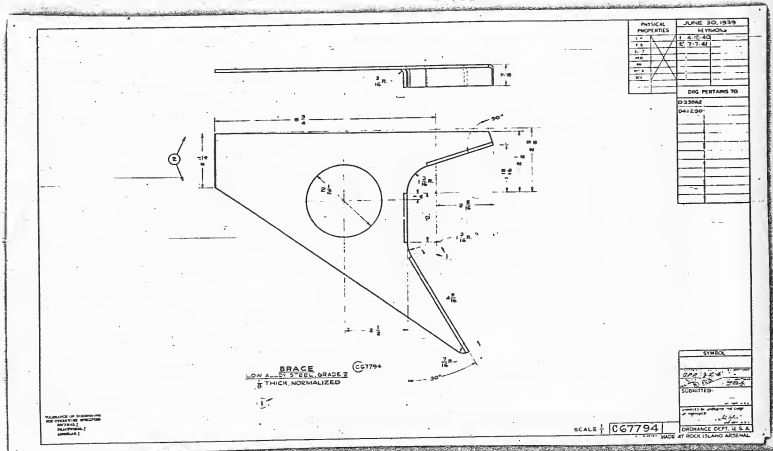
MICROFILM - A 44 - 504



SUPPORT 23997
 FOR WELDING DRIVING SEE 222027

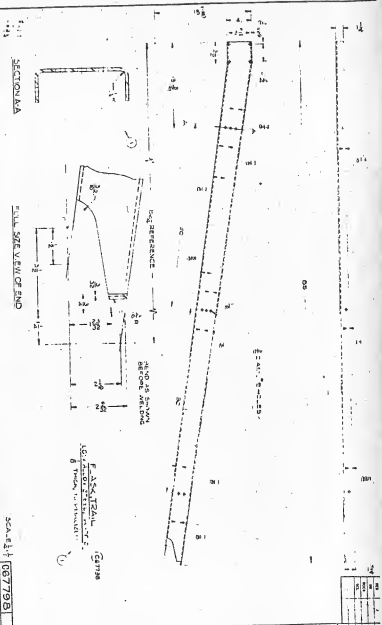
DATE	BY	CHKD	APP'D	REVISION NO.
JUNE 27 1951				1
REVISIONS				
210-01				
210-02				
210-03				
SYMBOL				
DIMENSIONS				
DIMENSIONS PERTAINING TO				
DRAWING				
SUBMITTED				
EXAMINED				
DATE				
BY				
FOR USE AS A				
DRAWING EXPL. U.S.A.				
MADE AT ROCK ISLAND ARMO.				

MICROFILM - A 44 - 609



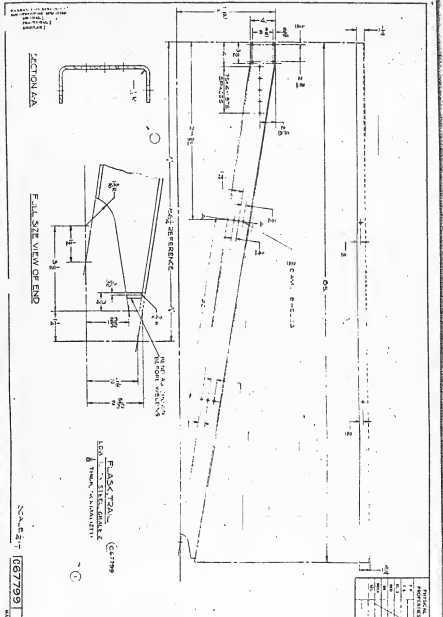
MICROFILM - A44 - 614


REV	DATE	BY	APP
1			
2			
3			
4			

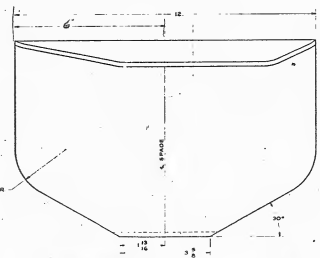
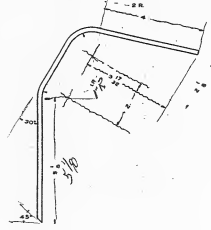
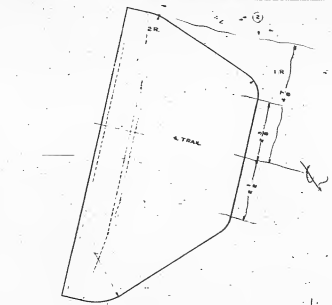


MICROFILM - A44 -
616

REV	DATE	BY	APP
1			
2			
3			
4			



$\frac{3}{16} \times 12 \times 12$




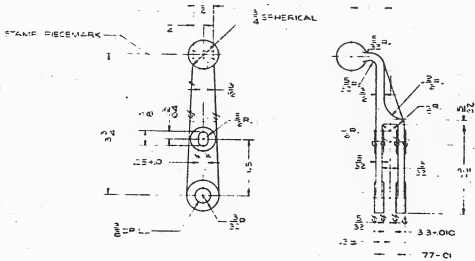
PIECE ③ 3032
 LOW ALLOY STEEL, GRADE 2
 1/2 THICK, NORMALIZED

PIECE NO 10352		REV.	DATE
1	4-10-50		
2	5-22-50		
ONE PARTING TO		DATE	BY
Q3292	Q4130	5-25-50	W.M.
SUBMITTED		EXAMINED	DATE
SCALE: 1/33952		ORDINANCE COPY, U.S.A.	
		MADE BY ROO CLARK JES	

MICROFILM - A 44 -

619

HEAT TREATMENT AND FINAL FINISH



HANDLE
BRONZE CASTING COMP NO 5 B152588

BRONZE CASTING COMP NO 5
B152588
77-CI
A 1511

PHYSICAL PROPERTIES	JUNE 30, 1939 REVISIONS
1 F	
1 G	
EL 2	
RED	
BB	
ROCK	
SC1	

DRG PERTAINS TO

D34104
D54105
D54249

SYMBOL

APPROVED BY: [Signature]
CREATED BY: [Signature]
SUBMITTED

APPROVED BY ORDER OF THE CHIEF OF ORDNANCE

ORDNANCE DEPT. U. S. A.
MADE AT ROCK ISLAND ARSENAL

SCALE: B152588

MICROFILM - A 44 -

66A

